

Discover

the University of Portsmouth

A **guide** for
international students
2011





Contents

Welcome	6-7
Top 10 things to love about the University of Portsmouth	8-9
Discover Portsmouth – the city	10-13
Your accommodation	14-15
Your halls of residence	16-17
Important information	18-19
Meet our students	20-21
Your student lifestyle	22-23
Your learning environment	24-25
Student advice and support services	26
English language support	27
International Office	28-29
Your career opportunities	30
Meet our students	31
Meet our staff	32
The Study Abroad Programme	33
Research degrees	34
How to apply	35
Portsmouth Business School	36-39
The Faculty of Creative and Cultural Industries	40-43
The Faculty of Humanities and Social Sciences	44-48
The Faculty of Science	49-52
The Faculty of Technology	53-57
Our Associate Colleges	58-59
Our overseas agents and representatives	60
Useful contact details	61
How to find us	62
University map	63







Term and semester dates 2011-12

Terms

Autumn term
Monday 19 September 2011–Friday 16 December 2011

Spring term
Monday 9 January 2012–Friday 30 March 2012

Summer term
Monday 23 April 2012–Friday 1 June 2012

Semesters

Semester one
Monday 19 September 2011–Friday 27 January 2012

Semester two
Monday 30 January 2012–Friday 1 June 2012

Why choose Portsmouth?

Stimulating degrees that are relevant to your future

In connection with professions and industry, we develop courses that make you attractive to future employers.

Academic experience

Our students are very satisfied with the quality of teaching on their courses, the approachability of staff and academic support.

Your degree plus

Interesting electives are available to supplement the skills gained through your course; you can learn another language or develop entrepreneurial attributes.

Preparing for your future

We work with employers to secure a range of opportunities, from part-time work whilst you are studying, to graduate career openings.

Cosmopolitan community

You'll be joining a varied and vibrant community of people with different experiences from over 100 countries.

Great learning spaces and facilities

Over £70 million has been invested in the last decade, making learning, sport and leisure spaces the best possible.

Location

Portsmouth is a waterfront city surrounded by the sea, which has shaped its history and culture. It is a modern city that is a breath of fresh air; it has a distinctive culture with edge and attitude, pride and passion.

Welcome from the Vice-Chancellor

Studying for a university qualification in another country is a major commitment. The University of Portsmouth has welcomed students from all over the world for many years, so we have the experience to help you reach your goals.



At the University we try hard to encourage full integration of international students into our academic and social life. We provide study opportunities of the highest quality at undergraduate, postgraduate and research level and also offer a friendly and supportive environment to meet your wider interests.

Our courses aim to provide you with skills for life as well as for learning. The importance that we place on this reflects the concern of future employers that you should develop team and individual skills, as well as academic knowledge. Our success in achieving this, with our recognised quality standards and excellent contacts with employers in

the UK and overseas, helps to explain the success of our graduates in gaining employment and advancing rapidly in their chosen careers.

We are a dynamic, multicultural community in which each individual student is assured of respect and privacy, and is able to gain support and advice where it is needed. You will meet students from over 100 countries and from every background.

It is an honour for the University and the city to welcome you most warmly to Portsmouth.

Professor John Craven



Top 10 things to love about the University of Portsmouth...

Portsmouth is a very popular university, ranked highly among the UK's leading modern universities. We have over 20,000 students, including more than 3,600 overseas students from over 100 countries. Our aim is to give you an excellent student experience focused on knowledge and skills essential for roles in the global workforce.



Relevant degrees

Portsmouth is a dynamic and forward-looking university where you will be supported to fulfil your potential. You will equip yourself with recognised graduate skills and attributes, empowering a spirit of independence, creativity and enterprise. We offer a range of undergraduate, postgraduate and Foundation courses developed in liaison with professions and industry to make you attractive to future employers.

3

Academic experience

Our students report very high levels of satisfaction about the quality of teaching on their courses, the approachability of staff and academic support. Our reputation for teaching and student support is something we value highly.

4

Outstanding facilities

Over £70 million has been invested in the last decade, making learning, sport and leisure spaces the best possible. The University Library was commended for its £11 million 'green' extension. In 2009, the Dennis Sciama Building opened to house the internationally-recognised Institute of Cosmology and Gravitation. We also have an impressive newsroom for our journalism students, a mock court room for our aspiring lawyers and the ExPERT Centre, where health science students can work with 'patients' – mannequins that breathe and react to drugs.



Waterfront city location

Portsmouth is a modern waterfront city surrounded by the sea, which has shaped its history and culture. The University campus is ideally situated in the city centre, close to the main shopping area and train station. Just a short walk away, you can enjoy fantastic sea views on Southsea seafront. Four miles of beach are backed by the green spaces of Southsea Common. A great way to appreciate the city is to experience the view from the Spinnaker Tower in Gunwharf Quays. Rising 170 metres tall, the tower offers amazing panoramic views over the city, the harbour, the south coast and the Isle of Wight.

5

Student satisfaction

For the third year running, University of Portsmouth students reported very high levels of satisfaction in the 2009 National Student Survey. 86 per cent of full-time students reported they were satisfied or very satisfied with their course, well above the sector average of 81 per cent. The results place Portsmouth within the top 25 per cent of mainstream English universities for student satisfaction.

**Your future**

Purple Door Careers and Recruitment operates a thriving onsite recruitment consultancy, working proactively with employers to help students find paid and voluntary part-time work, work placements and graduate jobs. It has strong links with local and national businesses and offers expert knowledge and advice to assist you in accessing opportunities.

10

World-leading research

Research at Portsmouth was rated world class in the latest survey of research quality at UK universities – the Research Assessment Exercise (RAE) 2008. Three subject areas – Applied Mathematics, Allied Health Professions and Studies, and European Studies were judged to be among the top research groups in their subject areas in the UK. In Applied Mathematics, Portsmouth was equal first with Cambridge, Durham and Oxford with the highest total (75 per cent) for research that is internationally excellent and world leading. Other world class research strengths include Business and Management Studies and Psychology.

6

Your business

If you have an idea, initiative or design and you'd like to 'make it happen', our Centre for Enterprise will inspire you to learn and succeed in entrepreneurship through developing enterprise skills and experience. The Centre helps both existing and former students, regardless of their course, by guiding innovative ideas and developing skills in business start-up, self-employment, freelancing and consultancy. Every year our Centre for Enterprise runs the Enterprise Challenge competition.

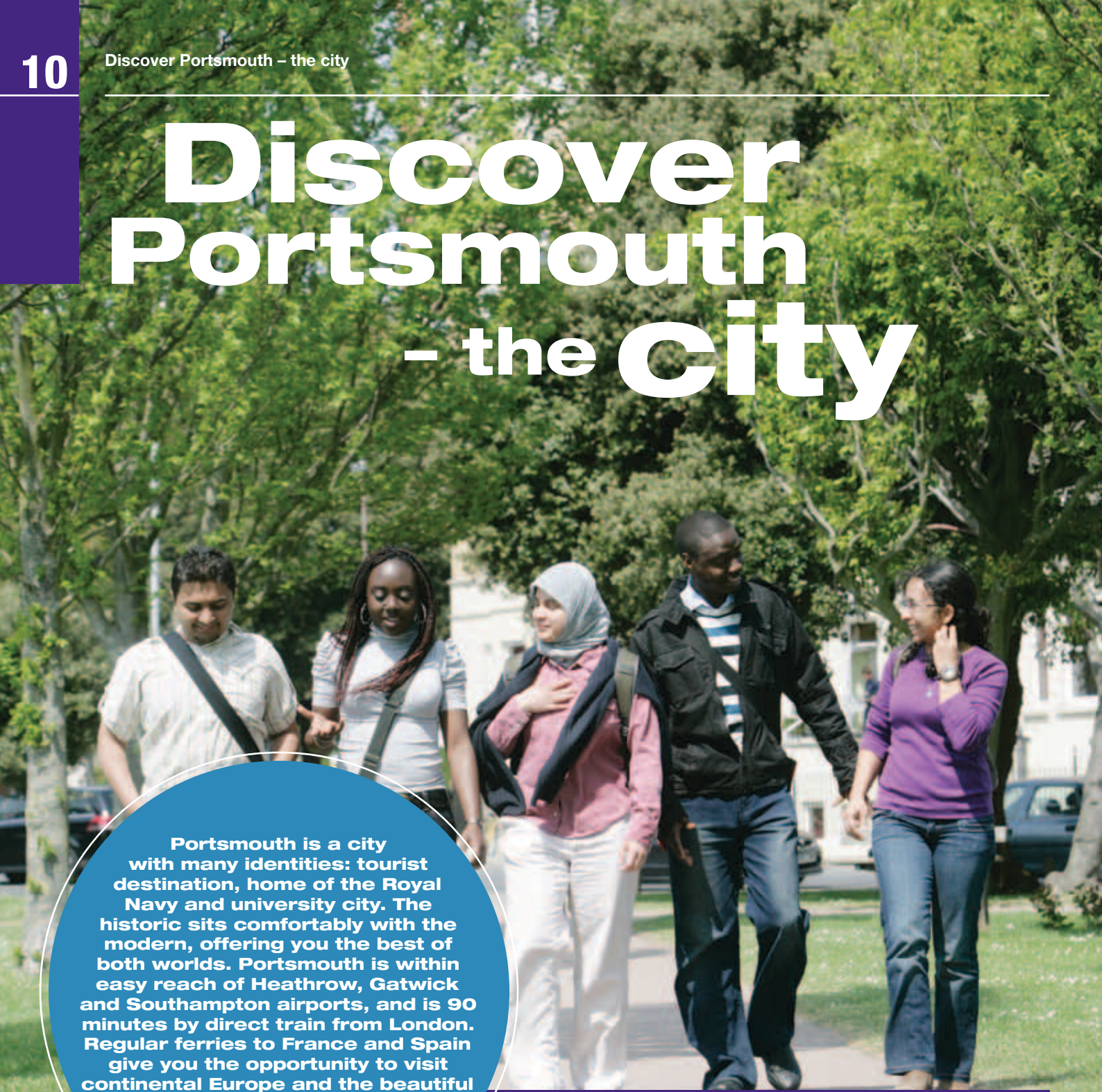
**Inclusive community**

We encourage, support and value diversity in our student population and treat everyone on the basis of their merits, abilities and potential, regardless of gender, colour, ethnic origin, age, disability, religion, political beliefs, family circumstance or sexual orientation. Together with our Students' Union, we have many dedicated faith and cultural organisations and facilities to support and promote the interests of a diverse student body.

**International student support**

Our International Student Advisers offer dedicated one-to-one support throughout your studies. We also organise an Orientation Programme for all new international and EU students. The University offers both academic and personal support with any issue, however big or small, throughout your time with us.

Discover Portsmouth – the city



Portsmouth is a city with many identities: tourist destination, home of the Royal Navy and university city. The historic sits comfortably with the modern, offering you the best of both worlds. Portsmouth is within easy reach of Heathrow, Gatwick and Southampton airports, and is 90 minutes by direct train from London. Regular ferries to France and Spain give you the opportunity to visit continental Europe and the beautiful Isle of Wight is a 15-minute hovercraft ride away.

2012: an Olympic year

London plays host to the 2012 Olympic Games. Events will be held throughout the UK and Portsmouth is within easy reach of many of the venues. The main Olympic Park is based in London, which is a 90-minute train journey, and nearby Weymouth will be home to the Olympic and Paralympic sailing competitions.

Portsmouth is also home to top athletes and Olympic hopefuls. Former student Sarah Webb won gold in sailing keelboat (yngling) at the Beijing 2008 Olympics.

The Mountbatten Leisure Centre, with its Olympic size pool, has been selected for inclusion in the official 2012 Pre-Games Training Camp Guide, which means that Portsmouth will have the chance to play host to teams from several participating countries.

The Guildhall Square in Portsmouth is home to one of 18 big screens built throughout the UK to screen all the events and latest news from London 2012.

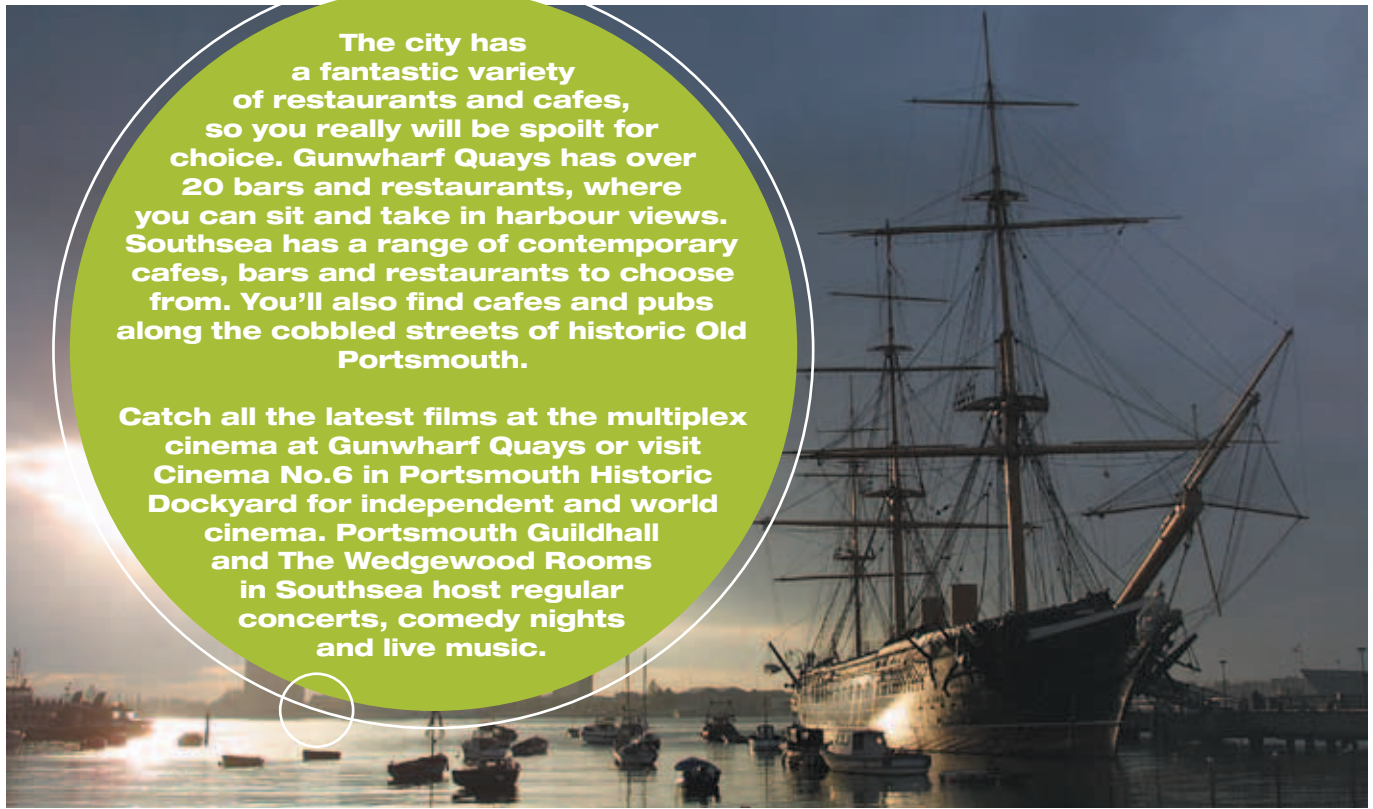
For more information, visit www.london2012.com.



Portsmouth is a lively coastal city in the south of England, full of character and diversity. If you are looking for a friendly, compact city with everything in reach, Portsmouth is ideal.

The city has a fantastic variety of restaurants and cafes, so you really will be spoilt for choice. Gunwharf Quays has over 20 bars and restaurants, where you can sit and take in harbour views. Southsea has a range of contemporary cafes, bars and restaurants to choose from. You'll also find cafes and pubs along the cobbled streets of historic Old Portsmouth.

Catch all the latest films at the multiplex cinema at Gunwharf Quays or visit Cinema No.6 in Portsmouth Historic Dockyard for independent and world cinema. Portsmouth Guildhall and The Wedgewood Rooms in Southsea host regular concerts, comedy nights and live music.



Seafront location

Southsea seafront is just a short walk from the centre of the city and offers beautiful sea views. Southsea Common is great for meeting friends and having picnics in the summer. The Common also hosts a range of activities throughout the year including a kite festival, running events and live music.

View from above

The Spinnaker Tower in Gunwharf Quays offers the perfect way to view Portsmouth. At an impressive 170 metres tall, you can experience vast panoramic views of the city, the harbour and the Isle of Wight, and walk on Europe's largest glass floor (if you're feeling brave!).



Cultural pursuits

Charles Dickens, Rudyard Kipling, Isambard Kingdom Brunel and Sir Arthur Conan Doyle have all left their mark on the city – you can discover their stories in the many museums and art galleries. For a diverse range of plays, live music and touring London shows, visit the Kings Theatre and the New Theatre Royal. The University also has close ties to the New Theatre Royal and students frequently perform there.

Shopping

As well as the high street shops in the centre of the city, Portsmouth has other shopping areas to suit everyone's taste and budget. From the bustle of the city centre, you can walk to Gunwharf Quays,

which offers outlet designer shopping, and with its many restaurants and cafés, there are plenty of places to stop for a coffee. Follow the water's edge down to Southsea, where you'll find a mix of high street, independent and specialist stores. Be sure to visit Albert Road, with its collection of quirky shops, retro clothing, antiques and craft shops.

Sporting life

Portsmouth offers plenty of facilities for a variety of sporting activities, from Southsea Common to the Olympic-standard Mountbatten Centre. Being a waterfront destination, you can also enjoy sailing and windsurfing on the Solent. If you enjoy watching football, be sure to visit Fratton Park, the home of Portsmouth Football Club.

Maritime heritage

Portsmouth is a city proud of its maritime heritage. Take a trip to the Historic Dockyard, home to HMS Victory, HMS Warrior, the Mary Rose Museum and the Royal Naval Museum. Discover how the sailors of the past lived their lives serving the nation on these great ships. Visit Southsea Castle where King Henry VIII stood and watched the Mary Rose sink in 1545.



**Southsea Common****Gunwharf Quays**

Portsmouth is a vibrant, waterfront city on the south coast of England, full of character. You'll really have the best of both worlds when living here; most of the University buildings are located in the heart of the city, while four miles of seafront is only a short walk away, great for spending your free time outside of lectures. Gunwharf Quays, the impressive harbour-side complex is also centrally located and a great place for shopping and entertainment.



Historic Dockyard



Guildhall Square



Southsea



Albert Road

Your accom

Starting university may be your first experience of living away from home. You will get your first taste of independence, but also be surrounded by other students who are in the same situation as you. This is an exciting time for all and finding the right place to live is important.

There are two types of accommodation available to you in Portsmouth: University-allocated accommodation or private rented accommodation.

University-allocated accommodation

We have a wide range of purpose-built, modern and well-equipped halls of residence where you will live among other students from different courses, cultures and backgrounds.

There are seven halls based in and around the city centre. We have three more halls at Langstone Student Village next to the University's sports fields, which overlook Langstone Harbour. Langstone also benefits from a large restaurant and a free bus service for students travelling to the Guildhall Campus (this service is offered Monday to Friday during term time and takes up to 15 minutes to reach the city centre).

All rooms are single occupancy (except for a limited number of twin rooms) and most have en suite shower and toilet facilities. We offer both catered and self-catered options. A typical hall bedroom is furnished with a single bed, study desk, chair, drawers, wardrobe, noticeboard, electrical sockets, network connections and a telephone.

What else is included in the accommodation fees?

- Utility services – gas, electricity, water.
- FREE broadband connection available 24 hours per day (PCs are not supplied).
- Access to 25 Freewire channels using Freewire TV through your PC or laptop, with the option of subscribing to up to 25 more for a small fee (TV licence required).
- Telephone service supplied by Freewire, which can be used to make free calls to other Freewire telephone users worldwide. It also offers very competitive rates when calling other networks and mobile phones, with the advantage of no additional set-up or subscription fees.
- Free voicemail.
- A dedicated Student Support Team.
- Access to launderette facilities.
- Basic insurance cover.
- Free internal telephone calls.

Female-only accommodation

Bateson Hall has an accommodation block which is solely allocated to female students. Individual flats in other halls can be allocated as single sex depending upon demand.

Postgraduate and mature students

Trafalgar studios are prioritised for postgraduate students, depending upon demand and availability. Individual flats in the halls can also be allocated for postgraduate and mature students depending upon demand.

Twin rooms

A very limited number of shared bathroom, en suite and studio twin study bedroom facilities will be available in selected hall locations.* Where a hall room is let on a twin basis, the rent will be adjusted so that each occupant is only paying 65 per cent of the normal single-let-rate.

Some twin rooms have combination 'study beds', which combine single bed and personal study desk space. The study bed is specially designed to offer daytime use as a study desk and then neatly folds away to offer a standard single bed for sleeping. Due to space restrictions, some rooms will have limited storage for suitcases; however, each study bed does incorporate unlocked, personal storage space for books and personal possessions.

Priority for these rooms will be given to students who already know someone who they wish to share with and where both parties have indicated this on their accommodation booking form.

*Applicants considering this option due to the cost benefits should be mindful of the implications of sharing a study bedroom and be sure that they will be content to share close personal space with another person for the duration of the academic year.

February intake students

If you are commencing a course in February you are welcome to apply for a room in halls of residence. Occupancy periods in these instances are initially for 17 weeks (until the end of the academic year.) Rooms for February are dependent on availability.



Accommodation

Private rented accommodation

The city boasts a generous provision of houses, flats and rooms for rent. The Student Housing Office can help and advise on finding private rented accommodation. This may be a preferable option for postgraduate students seeking

quieter accommodation, friends who want to live together or those who would like to live in a house with a garden. House-hunting events are arranged from July to September, during which accommodation can be reserved for the following term.

There are two main types of private rented accommodation: shared houses and flats, or lodgings.

Shared houses and flats

For independence, a house or flat share is the perfect choice. There is plenty of good, reasonably priced accommodation close to the University. Student Housing can provide a list of available properties in the private sector. You should expect to pay £65–£75 per week and a share of household bills, (approximately £15 per person per week) for this type of accommodation.

Lodgings

These are rooms offered in private houses where the owner or close relative lives on the premises. They can be family households or houses owned by other students. The University checks all rooms offered to ensure they meet our criteria. Half board (generally two meals per day are provided) or room only (cook for yourself) accommodation is available and may suit those on a tight budget, as rent is usually inclusive of bills and is normally paid weekly or monthly. You should expect to pay £75–£80 per week for room only and £85–£95 per week for half board.



Cost of living

We estimate that your cost of living for 37 weeks would be around £6,000–£7,000 (depending on your lifestyle). This should be enough to cover accommodation, food, toiletries, heating, books, clothing, modest travel and leisure activities.

What are your options?

- Catered or self-catered.
- En suite or shared bathroom.
- Guildhall Halls – in the heart of the city.
- Rees/Burrell – located close to Southsea seafront.
- Langstone Student Village – student accommodation village.
- Female-only flats.
- Postgraduate accommodation.
- Limited number of twin rooms available.

Things to note

- All fees are estimated and subject to confirmation.
- The fees given are based on a 37-week occupancy (session fee).
- All en suite rooms have private shower and toilet facilities.
- Fees include free internal telephone calls, access to cheap and sometimes free external calls using our internet-based telephone system, free broadband service and access to 25 TV channels (including international channels) – TV licence required.
- External calls can be made from rooms using a prepaid card.

Take a virtual tour of our halls of residence by viewing each hall online at www.port.ac.uk/accommodation

Your halls of



Margaret Rule Hall - Guildhall Halls

- Self-catering
- 342 en suite rooms arranged in self-contained flats accommodating three to seven students, with shared kitchen and dining facilities
- Cost: £3,843 per 37-week session (£103.46 per week)



Harry Law Hall - Guildhall Halls

- Self-catering
- 300 en suite rooms arranged corridor style, with shared kitchen and dining facilities for eight or nine students
- Cost: £3,765 per 37-week session (£101.36 per week)



Langstone Flats - Langstone Student Village

- Self-catering
- 192 en suite rooms arranged in self-contained flats accommodating eight students, with shared kitchen and dining facilities
- Cost: £3,367 per 37-week session (£90.65 per week)



Trust Hall - Langstone Student Village

- Self-catering
- 62 rooms arranged in self-contained flats accommodating eight students, with two showers and shared kitchen and dining facilities per flat
- There is a strict no smoking policy in this hall
- Cost: £2,743 per 37-week session (£73.85 per week)

residence



**Trafalgar Hall -
Guildhall Halls**

- Self-catering
- 288 en suite rooms arranged in self-contained flats accommodating six students, with shared kitchen and dining facilities and 40 self-contained studio flats, which are usually prioritised for postgraduate students
- Cost: £3,843 per 37-week session (£103.46 per week)
- Studio flats: £4,337 per 37-week session (£116.76 per week)



**Bateson Hall -
Guildhall Halls**

- Self-catering
- 273 rooms arranged in self-contained single sex flats accommodating five to six students, with shared shower, toilet, kitchen and dining facilities; TV lounge in hall
- Cost: standard room £2,782 per 37-week session (£74.90 per week); large room £3,102 per 37-week session (£83.51 per week)



**James Watson Hall -
Guildhall Halls**

- Self-catering
- 688 en suite rooms arranged in self-contained flats for four or six students, with shared kitchen and dining facilities
- Cost: £3,843 per 37-week session (£103.46 per week)



**QEQM Hall - Langstone
Student Village**

- Flexible catering options
- 332 en suite rooms mainly in mixed sex blocks or floors
- Cost: £3,206 per 37-week session (£86.31 per week for basic five meals per week package)



**Rees Hall -
Southsea**

- Catered (two meals provided each day)
- 269 en suite rooms arranged corridor style; two TV lounges
- Cost: £4,277 per 37-week session (£115.15 per week)



**Burrell House -
Southsea**

- Catered (two meals provided each day)
- 132 rooms arranged corridor style with shared bathrooms; all meals taken in Rees Hall
- Cost: £3,445 per 37-week session (£92.75 per week)

Important information

Accommodation

All international (non EU) students are guaranteed a room in University accommodation for the first year at the University (for courses commencing in October), provided you have completed an accommodation booking form and paid an advance rent payment of £200 by August 2011.

You can only book a room in a hall of residence if you are holding an unconditional offer and have accepted it. Accommodation booking forms will be sent to you after you have confirmed your place. Please note that occupancy periods are 37 weeks (whole academic year) unless otherwise stated.

International bursaries

GOAL Award

Global Outreach: Access to Learning (GOAL) Award is a new bursary scheme for international students at the University of Portsmouth. If you are a student from a low or middle income country, this can save you ten per cent on your tuition fees.

The award is available to self-funding undergraduate students in their first year of study, studying on a full-time course with annual fees of £9,600 or above and all full-time postgraduate taught and research students. The award is only for international (non-EU) students coming from countries of low and middle income as defined by the United Nations Human Development Index. For a full list of countries, see www.port.ac.uk/bursariesforinternationalstudents.

The GOAL Award cannot be combined with any other University discount or scholarship scheme, except the two per cent 'prompt payment' discount.

The Malaysia-Portsmouth Scholarship (MPS)

The MPS is a new scholarship designed to enable students from Malaysia to study at Portsmouth at discounted fee rates. It recognises the strong links which exist between Malaysia and the University of Portsmouth and marks the first decade of SEARO (South East Asia Regional Office) in Kuala Lumpur.

Under the MPS, privately-funded students will receive a ten per cent fee reduction for the first year of study only. The MPS applies to all degree courses with fees of £9,600 and above. The MPS cannot be combined with any other University discount or scholarship scheme, except the two per cent prompt payment discount.

Deposits

All undergraduate and postgraduate students will need to pay a non-refundable £1,000 deposit towards their tuition fees before they can receive their Certificate of Acceptance for Studies (CAS).

Existing University of Portsmouth undergraduate students, University of Portsmouth Alumni, government-sponsored applicants and students from partner institutions will not be required to pay a deposit. For full details, visit www.port.ac.uk/international/paymentoffees.

Alumni discount

The alumni discount of 20 per cent is available for postgraduate study for all self-funded students who have:

- previously gained a qualification at undergraduate level at the University, or



Visit the
tuition fee
look-up facility at
www.port.ac.uk/fees

- have been registered on a University of Portsmouth course at a partner institution and gained a University of Portsmouth undergraduate qualification

In order to qualify for a discount both you and the course you wish to take must be eligible. To check if a course is eligible for the discount, please visit www.port.ac.uk/tuitionfees.

EU fees

Tuition fees for students from the EU can be found using our look-up facility at www.port.ac.uk/fees.

Flexible payment of tuition fees

Fees can be paid in full (receiving a two per cent prompt payment discount) at enrolment or by instalments in five equal payments by Direct Debit in November, December, January, February and March. Similar arrangements are in place for February intake students.

If you pay two years' fees or more in advance (or during the first week of your course), you can pay a fixed entry fee for those years and avoid the small annual increase in tuition fees. Fees must be paid in full and will be fixed at the rate of your year of entry.

Fees can be paid in the following ways:

Online at www.port.ac.uk/webpay

Banker's draft – made payable to 'University of Portsmouth'

Debit/credit card (Mastercard/Visa)

Bank transfer

Direct Debit

Cheque – made payable to 'University of Portsmouth'

If you decide to pay by banker's draft or cheque, you should ensure that you have one for fees and a separate one made payable to yourself for living expenses.

Please see our website for more detailed information and payment forms www.port.ac.uk/tuitionfees.

English language courses

The University offers pre-session programmes for students holding a conditional offer for one of our degree courses who have not yet met the English language requirement for entry. We offer programmes for students who are 1 IELTS band and 0.5 IELTS band lower than the required level. Full information is available on page 27.

If you need a longer period of English study before starting your degree programme, our partner language school, Language Specialists International offers a range of programmes focusing on General English or IELTS preparation. LSI, a private language school in the centre of the University campus, is also a testing centre for the IELTS examination. For more details about LSI's programmes, please email contact@lsi-international.co.uk.

There are a number of other English language schools and pre-session providers in Portsmouth. For full details, see www.port.ac.uk/international/englishlanguage.

Our partners overseas

APTECH

For more than five years, we have worked with APTECH to provide advanced progression pathways for APTECH ACCP programme graduates. APTECH graduates with Advanced

University of Portsmouth degrees in your country

The University of Portsmouth has successfully delivered collaborative programmes and supported students through collaborative partner institutions across the world for over 15 years. A collaborative partner programme is a programme of study that is delivered and/or supported by a partner institution. On successful completion of your studies you will be awarded a University of Portsmouth degree.

For a list of validated programmes and partner institutions, please visit our website: www.port.ac.uk/international/overseaspartners

Diploma in Software Engineering are eligible to progress to the final year of a number of courses at the University of Portsmouth. Many APTECH and University of Portsmouth graduates have gone on to enjoy very rewarding careers in industry. We also provide progression routes for APTECH ARENA graduates.

For further information, please check the following websites:

APTECH website (Worldwide): www.aptech-worldwide.com
APTECH website (Vietnam): www.aptech-globaltraining.com/html/vietnam/ace_alliance.htm

Edexcel

Edexcel offers a variety of qualifications, including A Levels (GCES), GCSEs and the BTEC suite of vocational qualifications. It is an international organisation with centres all over the world. The University of Portsmouth provides a range of pathways for BTEC Higher National Diploma graduates who are seeking to top up their HND to a degree in the following subjects: applied biology, applied chemistry, biomedical science, business, computing, civil engineering, construction, electronic and electrical engineering, health and social care, hospitality management, sport and exercise sciences, and sport and leisure management.

Please contact the International Office for more information or visit the Edexcel website www.edexcel.com.

Informatics Education

The University of Portsmouth has worked with Informatics Education for more than ten years, jointly providing courses through Informatics Global Campus. Courses are delivered both on campus in Singapore, as well as to homes and centres throughout Asia and the rest of the world. Students completing Informatics' qualifications are also able to apply to the wide variety of University of Portsmouth courses.

Details about the computing courses offered through Informatics Global Campus can be found at www.purpletrain.com.

Meet our students



Sithu Aung, Myanmar (Burma)

MBA (International)

“ I chose to study an MBA to continue my business education further and to have social networks and contacts for future business. I was surprised and extremely pleased when I was awarded an MBA scholarship. There are good facilities: handouts, classrooms, teaching materials, library and online resources. I also find the Academic Skills Unit (ASK) very helpful. It is a great University, particularly the Business School. The residents are friendly and I enjoy making friends from the local area as well as from different countries. ”



Angela Sofia Triana, Colombia

MSc Technology Management

“ I chose this course as I wanted to develop my managerial skills and enhance my career prospects as an engineer. The University facilities are first-class and staff are very understanding of the needs of international students. I had excellent support from both the Academic Skills Unit and English for Academic Purposes. They offer useful guidance on improving your language skills and coping with the demands of your course. When I am not studying, I enjoy walking along the seafront. I love the energy that the sea brings to the city. I also like keeping fit so I joined the University gym and follow a range of fitness classes. ”



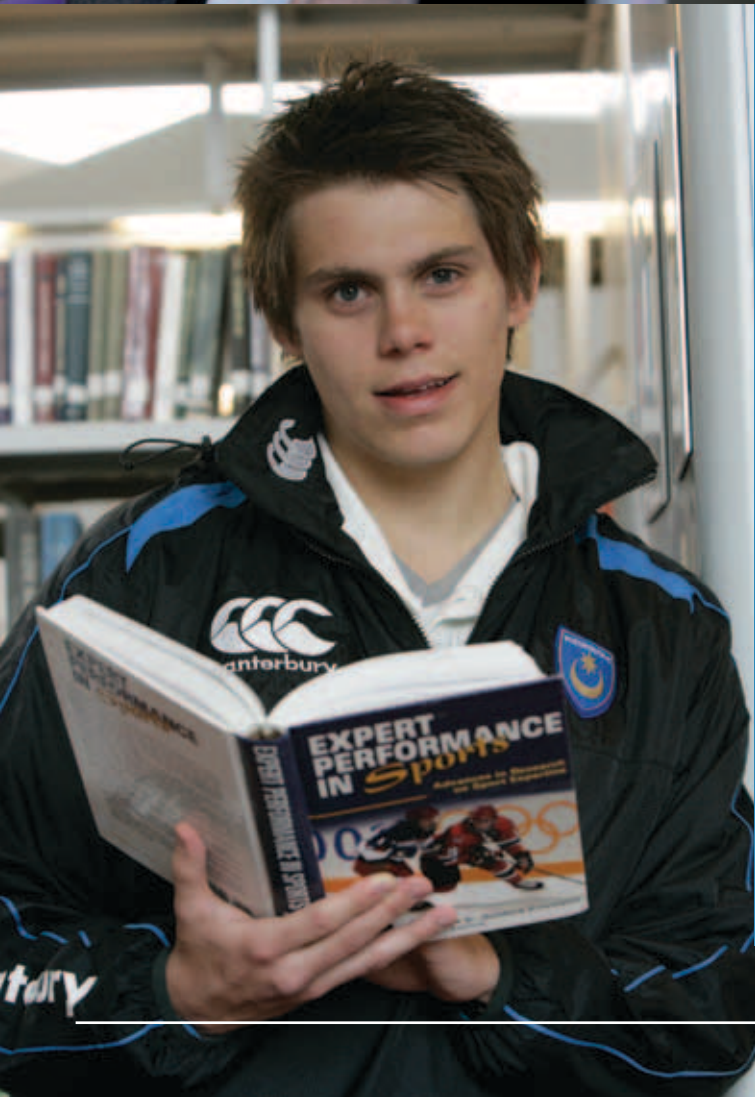
Nattina Boonsuthi, Thailand

MA International Business and English

“ I had been studying at a language school in Portsmouth and decided to continue my postgraduate studies at the University. The course is perfect for me as it provides all the necessary skills needed for a successful career in business. We receive a lot of support from our lecturers and the library facilities are excellent. There is wireless access to the internet all over campus and you can even access library resources online.

Portsmouth is a city with lots of history and I enjoy visiting the local attractions. I also like shopping and Portsmouth has a variety of local shops and outlet stores that you can choose from.

”



Sindre Kristensen Grødem, Norway

BSc (Hons) Sports Development

“ I first heard about the University of Portsmouth at an educational fair in my home town. I knew I wanted to study something related to sports and management, and also that I wanted to study abroad. Portsmouth was the perfect place for me. My course not only focuses on sports management, but also includes aspects of business and administration. The lecturers and staff in the Department of Sport and Exercise Science are very friendly and helpful.

The city of Portsmouth has a beautiful coastal location. When the weather is warm Southsea Common is filled with students playing games, having barbecues or just enjoying the sun. All in all, it is a very nice city to be a student in!

”

Your student lifestyle

We know you want to make the most of your time at University and you can be confident that Portsmouth offers many opportunities to make new friends and have fun. Portsmouth is a student city and offers a wide variety of ways to spend your leisure time. Whether it's shopping at Gunwharf Quays or relaxing on the beach with friends, there is always something to do! Nightlife in Portsmouth is inexpensive and varied, having developed around the student population. Many local clubs and sports centres also offer student discounts.

The Students' Union

The Students' Union is run by students and exists to help you make the most of your time at University. The Union ensures you are able to try out new experiences and have a place to come if you need someone to talk to or a place to relax and meet friends.

The Students' Union is home to the Athletic Union and a large selection of special-interest societies. Whatever your passion, you can get together with like-minded people and share your interests! Societies include computer games, juggling, creative writing, fashion and textiles. There are also many cultural-specific and religious societies such as the Malaysian Society, Hong Kong Society, Christian Union and Hindu Society.

The Union hosts the Freshers' Fayre at the beginning of the academic year, where huge marquees accommodate local businesses and representatives from more than 100 sports clubs and special-interest societies.

The Student Centre complex includes the University shop, sports bar, coffee shop and our new student zone, 3rd Space; a relaxed, social, alcohol-free environment offering an alternative to the learning zones in the University Library and the social spaces of the bars and clubs.



Part-time jobs

Purple Door Careers and Recruitment advertises part-time jobs and vacation employment opportunities in the local area, plus a wealth of information and advice relating to employment in the UK and overseas. It also offers workshops and sessions for international students on employment legislation in the UK. See page 30 for more information.



Sport

Student sporting life in Portsmouth is diverse and lively. We see sport and healthy activity as an essential part of your experience; whether you are an elite performer or a casual participant, we offer a range of excellent services for you to get involved in. The University has two sports centres and an outdoor sports complex, outdoor grass pitches, a gym and much more!

The Athletic Union oversees approximately 50 clubs, ranging from mainstream sports such as football, netball, rugby and hockey, to the more extreme skydiving and roller hockey. Every week our teams compete in BUCS (British University and College Sport) championships.

Our location on Britain's south coast provides an ideal position to enjoy all kinds of water sports such as windsurfing and sailing.

We are strongly committed to developing the delivery of elite sport at Portsmouth. Our Sports Scholarship Scheme offers financial and sports science support, facility access, academic and personal mentoring, physiotherapy, strength and conditioning and fitness programmes all tailored to the individual athlete's needs. If you play sport at international or national level, you could be eligible for a sports scholarship. Visit www.port.ac.uk/sport for more information.

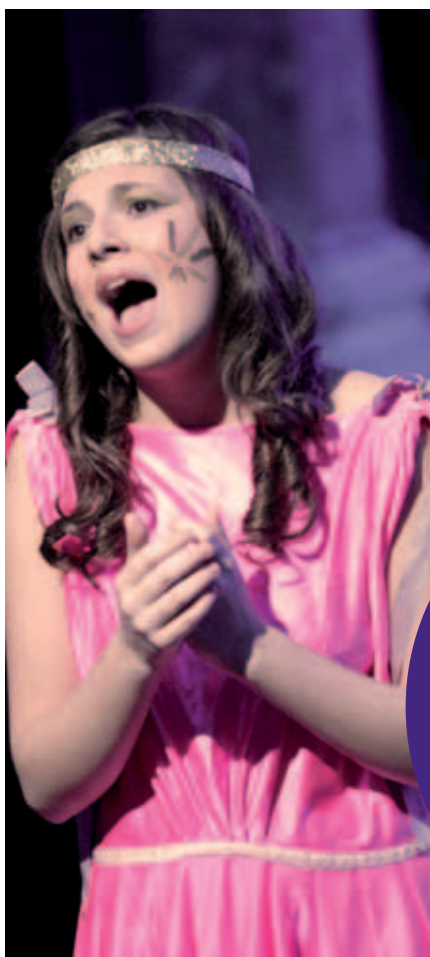


Music and drama

The Music Department offers a wide range of activities for students from all subject areas who are interested in music. Activities include a choir, orchestra, big band, wind band and the Dramatic and Musical Society. The University also has a close partnership with the New Theatre Royal, which encourages development of the arts in Portsmouth.

Food

A variety of food is available to buy in Portsmouth, including African, Caribbean, Halal, Indian and Oriental. In fact, you can find food from all over the world, so you don't need to worry about missing out on your home comforts! We can provide you with a list of specialist stores on arrival.



That extra something...

Employers look for what else you can offer in addition to your academic experience. If you are interested in a career in the media, the Union's newspaper, magazine, TV and radio stations have helped propel many former volunteers into enviable careers.

Your learning environment

We provide you with excellent, well-equipped learning spaces and the latest computing facilities and resources.

At university you will find less emphasis on formal supervised teaching and more on private study and group work. This means that you need access to high quality learning resources and support.

Computing facilities

You will have access to excellent computer facilities and places to study between lectures. We have invested heavily in these areas to ensure that you have the facilities you need to support your studies. We have open access areas all around campus with the latest equipment and support if you need it. You can expect the following:

- IT support available 24 hours a day throughout the year
- computer suites with specialised software and equipment available throughout the campus
- four open access areas with over 450 PCs, printing facilities, laptop working areas, group working spaces
- service delivery advisers on hand to assist with problems
- a fast, extensive and free wireless network, so if you prefer to use your own laptop, you can access University resources and the internet wherever you choose

Once you arrive, you will have your own computer account and be able to access the following:

- a Google account with email, calendars and much more (you can keep your Google account after you graduate)
- 5GB of ultra fast and secure storage
- initial free print credit automatically added to your account at the start of each academic year

If you are living in halls of residence, you will also have access to 100Mbps free broadband, internet phone with low-cost calls and free digital TV, with 25 channels received through your own laptop.

Student IT Support Centre

When you need extra help, the Student IT Support Centre is located in the centre of the campus, next door to the Students' Union. Here you can get free help with any IT issue, whether you are having trouble connecting to the wireless network or need some basic IT advice.



You can find out more information at www.port.ac.uk/library



All your information online

We have a dedicated student site for details of your timetables, exam grades, library loans and news updates. Your Google account means you can keep in touch with your fellow students, share your work online and keep all your email in one place. You will also benefit from our virtual learning environment, Victory, where you will find activities and resources for your course.

Find out more by visiting the Information Services web pages at www.port.ac.uk/is.

The University Library

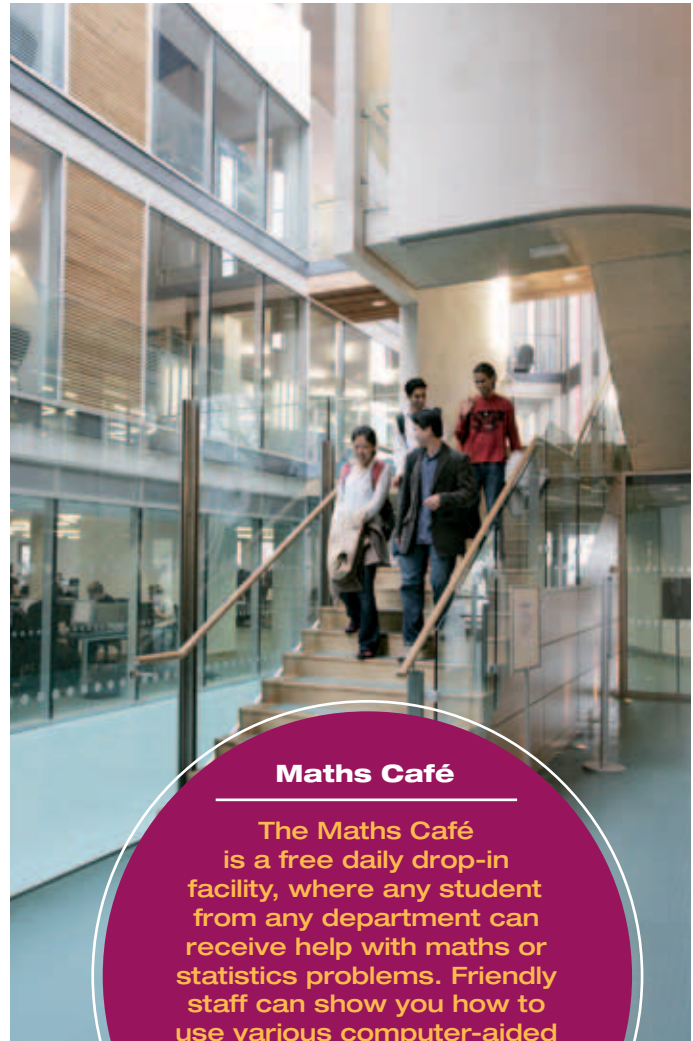
Our library is so much more than books; it is a great place to study, access all your information needs and meet friends. Located right in the heart of the campus, in the leafy grounds of Ravelin Park, it is open from 8am until midnight every day during term-time.

We are constantly investing in resources for all subject areas and offer:

- thousands of ebooks and ejournals and online newspapers, which can be accessed across campus, from home or wherever there is an internet connection
- over 400,000 books, as well as DVDs, maps and microfilms
- wireless connections across the whole building and laptops for loan
- an online catalogue so you can check availability of books and reserve or renew them
- high demand books on one-day or four-hour loans to ensure wide availability
- a service that lets you borrow books from other libraries
- a cafe to enjoy hot and cold snacks while you take a break

You will never be far from help as there are friendly and supportive staff on every floor. Plus, you can choose to study in an area suited to your needs, whether it is a silent study area or group room.

Our specialist librarians work closely with lecturers, making sure you have the resources you need. They can also help you in person or via email and run an intensive programme of workshops designed to help you succeed.



Maths Café

The Maths Café is a free daily drop-in facility, where any student from any department can receive help with maths or statistics problems. Friendly staff can show you how to use various computer-aided learning packages, which can be accessed via the University's computer network.

Specialist learning facilities

We have many specialist subject-specific learning resources. The School of Law is home to the first mock courtroom in the south east of England, a £1 million exact replica of a crown court complete with dock, witness box and jury room.

The Institute of Criminal Justice Studies is home to Forensics House, where students can analyse carefully staged crime scenes.

The ExPERT Centre allows students in the health-related sciences to use three simulation areas: a ward area containing four beds with human patient simulators, an operating theatre and a clinical laboratory.



Student **advice** and **support** services

We offer a range of both academic and personal support from our friendly, professional Student Advice Services.

We can help you settle into your new home, provide financial advice and make sure you have the skills to succeed. We offer one-to-one guidance and support in all areas of student welfare, tailored to your individual needs. Visit www.port.ac.uk/studentsupport for more information.

Student Housing

Student Housing is responsible for the allocation of University accommodation and maintaining up-to-date lists of private accommodation. Staff are available to help you before you join and throughout your study. For more information see www.port.ac.uk/accommodation.

Health and medical care

We encourage you to register with a doctor as soon as you arrive – do not wait until you feel ill! We can advise you on which doctor's surgery is closest to your accommodation.

The Additional Support and Disability Advice Centre (ASDAC)

If you have a specific learning difficulty, chronic illness, physical or sensory impairment or mental health difficulty that may adversely impact upon your learning experience, you must let us know when you apply. You will then be sent an information pack outlining the support available. For further information, visit www.port.ac.uk/asdac.

Academic Skills Unit (ASK)

ASK provides advice and guidance on specific academic skills to assist you in your studies. We work with departments as well as providing one-to-one tutorials on topics such as essay writing, presentation skills, reading for academic purposes, grammar, punctuation and much more. For more information, visit www.port.ac.uk/ask.

Counselling Service

The Counselling Service can provide support for personal problems. The one-to-one sessions with professional counsellors are free and completely confidential. To find out more, visit www.port.ac.uk/counselling.

Nursery

We recognise the importance of childcare and provide a day care nursery with qualified nursery staff. The nursery is registered to accept children aged between six months and five years. If you need to apply for a place, you should do so as soon as you can. For more details, visit www.port.ac.uk/nursery.

Chaplaincy (religious support)

The Chaplaincy is here to support people of all faiths and none. We provide space for prayer including a quiet room that can be used by anyone, and an Islamic prayer room divided for men and women, including washing facilities.

There is also comfortable space to sit and relax with friends. Occasionally, we organise lectures and discussions that explore issues relating to values, meaning and purpose.

Our three chaplains all have experience of working or studying in the UK and abroad, and of being alongside people of different faiths and cultures. They are well aware of the challenges that can arise when you move to a new environment and are here to help you as you adapt to living in the UK. To find out more, visit www.port.ac.uk/chaplaincy.

Student Finance

The Student Finance Centre's 'Money Doctors' provide you with information and guidance on budgeting and general financial matters. For information about one-to-one surgeries and workshops please visit www.port.ac.uk/moneydoctors



English language Support

Pre-sessional English language

Here at Portsmouth there are three pre-sessional courses designed to help you improve your level of English so that you can study effectively at university-level in the UK. At the end of your course, your language development is measured by comparison to IELTS bands (but you do not have to take another IELTS test).

These courses are available to you if:

- you hold a conditional offer for one of our degree courses but have not yet met the English language requirement for entry
- you have more than IELTS 4.5/TOEFL 480 (or 54–55 IBT) with no component more than 0.5 below your overall IELTS score
- you want to do a refresher course in English and you have met the academic conditions for entry to one of our degree courses and the English language requirements

Unfortunately, we are unable to offer English language courses to you if you are not currently holding an offer for a University of Portsmouth course or are more than one IELTS band below the English language requirement stated in your offer letter.

Which pre-sessional course is for me?

	Length	*Entry requirements
Programme 1	12 weeks	1 IELTS band lower than your offer
Programme 2	8 weeks	0.5 IELTS band lower than your offer
Programme 3	4 weeks	Refresher only

*** Note:** We will need to see your current IELTS/TOEFL/Pearson certificate in order to accurately advise which programme you should follow in order to meet the requirements of your academic course. The certificates should have been achieved within 18 months of the start of your course with us.

How you will be taught/assessed

You will spend approximately 20 hours per week on directed learning. In addition to classes, lectures, seminars and elearning, you will also have periods of self-directed learning and will be expected to continue to work and study in the evenings and weekends. You will study aspects of both academic and general English.

Further information can be found at www.port.ac.uk/presessionalenglishcourses.

Facilities

The Learning Resources Centre located within Park Building provides a variety of resources for students including wireless computer access, live satellite broadcasts in eight languages, DVD and video viewing stations, an extensive foreign film and documentary archive – and a large collection of books and reference resources.

Academic English language support during your studies

If you require further help with English language and UK academic style during your studies, our School of Languages and Area Studies offers free English for Academic Purposes classes. These courses can be taken for academic credit or for support only. Skills include:

- essay writing (including referencing and citations)
- literature review writing
- dissertation writing
- giving a presentation
- critical thinking and writing
- technical writing
- grammar and academic style

Partnership with Language Specialists International (LSI), Portsmouth

The University of Portsmouth has a long standing agreement with LSI, a local language school and recognises their pre-sessional programmes for progression onto our courses. Further information can be found on their English language courses at www.lsi-international.co.uk.



Language Specialists
INTERNATIONAL



The International Office

Arriving in a new country can be a daunting prospect! We take great care to help you settle into your new way of life within the University and the local community. We recognise and understand the cultural changes you may experience in the UK.

Our support begins long before you arrive in Portsmouth. We travel extensively overseas and would be delighted to meet you and answer any questions you or your parents have face-to-face. For details of our forthcoming visits go to our website www.port.ac.uk/international/regions.

Once you arrive in Portsmouth, we provide continuous support to make your time here as stress free and enjoyable as possible, enabling you to focus on your studies.

International Student Advisers

The International Student Advisers (ISAs) offer personal and confidential one-to-one guidance throughout your studies.

Extending your student visa

We offer a special scheme where we check and post your visa application and supporting documents to the UK Border Agency for you.

Opening a UK bank account

The International Office offers advice on opening a bank account in the UK and will provide a supporting letter and list of banks when you arrive.

Social events and excursions

We organise a programme of events throughout the academic year that includes celebrations and sightseeing coach trips to famous cities such as Oxford, Brighton, Winchester and many more!

Working in the UK

We can advise you on working regulations and how to obtain a National Insurance number. We also produce supporting letters for your employer and give post-study work advice.

More information about our services can be found at www.port.ac.uk/international/studentadvisers



Mix and Match

– a whole world within your reach!

This is a student mentoring scheme run by the International Office. It helps new and current students meet and talk about anything from life in the UK to daily course lectures. We have over 600 members from around the world and, who knows, you could make a friend for life!

It's free to join and you will:

- make friends from around the world
- meet current students
- learn about other cultures
- practise your language skills
- find a course buddy
- meet staff from the International Office
- be able to volunteer to help with events – it would look great on your CV

What type of events do we have?

We run events throughout the year which encourage our members to make friends and learn about other cultures. We have held cooking competitions, sporting events and cultural festivals. As well as social activities, we also hold monthly mentoring sessions where you can meet up informally with other members and discuss all matters of interest.

Where can you find out more about this scheme?

W: www.port.ac.uk/mixandmatch

E: mixandmatch@port.ac.uk

You can also find us on Facebook. You are welcome to join the group before you arrive in Portsmouth. This will give you the opportunity to chat with current members and see the events we are planning.

The Island

We produce an e-newsletter called *The Island* during the academic year to keep you updated with events, presentations and general useful information.

Visiting other countries

We provide information and supporting letters to the relevant embassy for entry visas, including Schengen visas.

Inviting friends and family to the UK for a visit

We advise on the documents required for friends or family members to visit you whilst you are studying in the UK.

The International and EU Orientation Programme

Orientation is your chance to meet staff and make new friends before you start your course. Our programme will enable you to:

- register on your course
- settle into your accommodation
- obtain all the information you need about the University and city
- meet academic staff from your department
- learn about what support services are available to you
- join in social events such as walking and coach tours, bowling and more

By the time your course starts, you will have new friends and will know your way around the campus and the city!

Airport pick-up

You will be in safe hands as soon as you arrive in the UK. We offer a coach pick-up service for a small fee on specific dates from London Heathrow airport. We collect you and bring you straight to the campus. You will be able to identify us at the airport by our purple t-shirts and our University signs. More information on this service will be sent to you with your final documents before you arrive.

For more information on our Orientation Programme and tips on preparing for travel, please visit www.port.ac.uk/international/newstudents



Your Career opportunities

To ensure you are prepared for the world of work when you graduate, we offer an extensive range of career planning guidance and resources. Not only will you graduate with a good degree, you'll be ready for a rewarding career with the skills and attributes needed in today's competitive job market.

Purple Door Careers and Recruitment

The Graduate Employability Programme is run by our Purple Door Careers and Recruitment service. It offers a wide range of employer and career planning events. Fully qualified and experienced staff can help you research your ideas and plan for your time at University and beyond.

The Centre is a friendly and accessible facility in the heart of the campus. It is open all year round offering:

- a team of experienced careers advisers available every day in term-time and for up to five years after you graduate
- online resources and a convenient eguidance service for email enquiries
- a graduate summer programme to improve your employability and secure your first job
- events and seminars tailored to the needs of EU and international students such as CV workshops, and sessions on developing job seeking strategies and preparing for job interviews

Purple Door Careers and Recruitment has its own onsite recruitment service, working with employers to help students find paid part-time work, work placements whilst you are studying, voluntary work and graduate jobs. It has strong links with local and national businesses and offers expert knowledge and advice to assist you.

Find out more

To find out more about our Graduate Employability Programme, please visit our website www.port.ac.uk/careersandrecruitment.

Learning new skills

Employers have become more demanding in what they expect from graduates. Taking an elective is a good way of developing your employability skills. Electives are optional units that may not be directly related to your subject, such as languages, music or business venturing. As well as gaining credit towards your degree, electives will help you improve your communication and teamwork skills.

Purple Door Careers and Recruitment can also assist you in contacting local companies to arrange work-shadowing, which will give you a practical insight into

Working during your studies

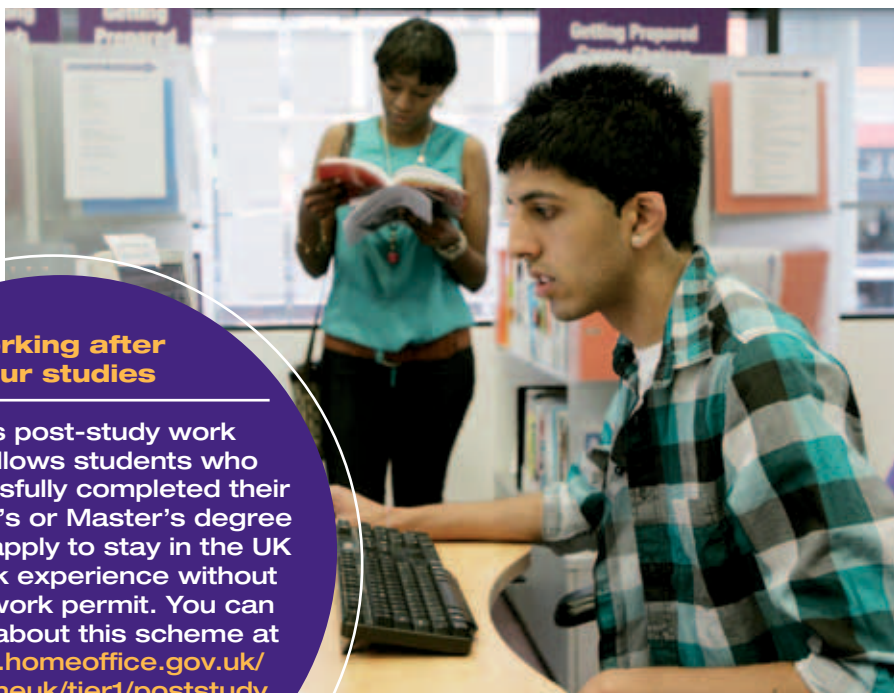
If you have student immigration permission, you can work up to 20 hours a week during term-time and full time during your holidays. The Job Shop in Purple Door Careers and Recruitment offers a wide range of part-time employment opportunities to fit around your studies and many local employers are keen to employ students.

the workplace and expand your CV. They also advertise volunteering opportunities on a diverse range of projects from working with young people to marketing a radio station.

For further information visit www.port.ac.uk/careersandrecruitment/students.

Working after your studies

The UK's post-study work scheme allows students who have successfully completed their UK Bachelor's or Master's degree and PhD to apply to stay in the UK to gain work experience without needing a work permit. You can read more about this scheme at www.ukba.homeoffice.gov.uk/workingintheuk/tier1/poststudy



Meet our students



Durmus Akkaya, Turkey

BEng (Hons) **Civil Engineering**

“ I heard about Portsmouth from my friends and my university in Turkey (Yildiz Teknik University). The combination of field trips and lectures makes studying civil engineering in Portsmouth very appealing and I feel that I will be well-equipped when I enter the workplace. ”



Ibukun Odebode, Nigeria

BSc (Hons) **Computing**

“ I heard about the University of Portsmouth during a seminar at my school (Aptech, Ibadan Centre). BSc Computing covers a wide area of IT and gives me a lot of flexibility in terms of future employment prospects. ”

Trang Thu Ha, Vietnam

BSc (Hons) **Economics, Finance and Banking**

“ The University of Portsmouth is one of the best modern universities in the UK with very good facilities. I enjoy the structure of my course as it covers a broad range of economics and finance. The School really focuses on providing students with skills that will make them as employable as possible. ”



Meet our staff



Dr David Ndzi
Department of Electronic and
Computer Engineering
Faculty of Technology

Dr David Ndzi is Principal Lecturer in the Department of Electronic and Computer Engineering. His responsibilities include supervising PhD students, being the research course leader and running the Student Computer Surgery. He is also International Coordinator for the Faculty of Technology, which means he visits institutions in several countries in Asia, Africa and Europe on behalf of the University.

Originally from Cameroon, Dr David Ndzi received his PhD from Portsmouth.



Dr Jasper Graham-Jones
Department of Mechanical and Design
Engineering
Faculty of Technology

Dr Jasper Graham-Jones is a Senior Lecturer in the Department of Mechanical and Design Engineering. His responsibilities include teaching, supervising PhD students, consultancy, course leadership for the marine sports technology degree and organising recruitment, curriculum development and schools liaison. His job has involved considerable international travel all over Europe, Russia, Ukraine, America, Saudi Arabia and India.



Dr Lin Zheng
School of Languages and Area
Studies
Faculty of Humanities and Social
Sciences

Originally from Mudanjiang City, China, Dr Lin Zheng is a Senior Lecturer in the School of Languages and Area Studies. She teaches a wide range of subjects related to international business communication and coordinates several units in her department. She is also international liaison for the Faculty of Humanities and Social Sciences.



Dr Peter Andrew
Department of Accounting and Finance
Portsmouth Business School

Dr Peter Andrew is Principal Lecturer in the Department of Accounting and Finance. He has extensive experience in the public sector, manufacturing and consulting. He teaches on the MBA (International) course and looks after accounting students in Bulgaria.

Dr Andrew received his PhD from King's College, London. He is a Chartered Secretary and a member of the Association of International Accountants.



Jenny Morice
School of Creative Technologies
Faculty of Creative and Cultural
Industries

Originally from Australia, Jenny Morice is Associate Dean (Academic) in the Faculty of Creative and Cultural Industries.

She also fulfils the role of International Coordinator for the Faculty of Creative and Cultural Industries and works to create links with institutions in China, Malaysia, India, Hong Kong and Japan.



Professor Vasudevi Reddy
Department of Psychology
Faculty of Science

Professor Reddy has taught at Portsmouth since 1986. Her research, focusing on everyday interactions between children and parents, explores the role of emotional engagement in social understanding and informs her teaching of Developmental Psychology. She has recently published a book with Harvard University Press on her research on infants.

Professor Reddy completed her undergraduate and postgraduate studies in India.

The Study Abroad Programme

The Study Abroad Programme allows you to experience student life at the University of Portsmouth on a short-term study placement.

The programme enables international and EU students, who are enrolled at a university outside the UK, to study at Portsmouth for one semester or one academic year. On completion of assessments in each of the courses studied, you will gain credit, which you can transfer back to your home university.

Courses

To check whether your major or minor is available, please visit www.port.ac.uk/courses. A list of courses can be sent to you on request.

We advise you to check with your academic adviser to ensure that credit gained at Portsmouth will be accepted towards your degree.

Each unit of study is worth 10 or 20 credits and you will study a maximum of 60 credits per semester:

**10 UK credits = 5 ECTS credits
= 2.5 US credits**

**20 UK credits = 10 ECTS credits
= 5 US credits**

**60 UK credits = 30 ECTS credits
= 15 US credits**

Semester dates

Autumn (fall) semester 2011/12

19 September 2011 to 27 January 2012

Spring semester 2011/12

30 January 2012 to 1 June 2012

Assessments

For most courses there will be one or two assessments (written examination and/or coursework) towards the end of the semester.

Assessment periods will be:

Autumn (fall) semester: January 2012

Spring semester: May/June 2012

On successful completion of assessments, you will be awarded credit for the unit of study. A transcript will be issued for you to present to your home institution.

Junior Year Abroad

If English is not your first language you may apply for the Junior Year Abroad, which includes one semester of English language at our partner language school, Language Specialists International, followed by one semester of the Study Abroad Programme. You can enrol on the Junior Year Abroad in September or April.

Alternatively, if you will be starting in the fall semester, you may be eligible to enrol on a pre-session English course at the University between July and September.

For more details on the Junior Year Abroad, please email jya@port.ac.uk.

Fees

One academic year: £9,000

One semester: £4,500

For Junior Year Abroad fees, please contact jya@port.ac.uk.

How to apply

If you would like to apply for the Study Abroad Programme, please download and complete a Study Abroad application form from www.port.ac.uk/studyabroad.

Please send your completed application form, with university transcripts (translated into English) and one academic reference to:

Study Abroad Department International Office

University of Portsmouth
Nuffield Centre, St Michael's Road
Portsmouth, PO1 2ED, UK

E: studyabroad@port.ac.uk

T: +44 (0) 23 9283 3149

Entry requirements

- At least one year of university study in a relevant major/minor
- 2.6–2.8/4 depending on your chosen subject
- IELTS 6.0 or TOEFL 80 IBT (if your first language is not English)

Profile

Julia Alcazar,
Los Angeles, California

BSc (Hons) **Mathematics**



“ I came to the University of Portsmouth for one year as a Study Abroad student from LA, California. I had the option to take any unit from any course, but as a mathematics student I chose the units provided to get as much maths experience as I possibly could, while at the same time gaining credit towards my degree back home.

The faculty and students are all really friendly and have helped me adjust to a new learning environment with ease. The great thing about Portsmouth is that many things, from dining and shopping to clubs and pubs, are merely a walk or bus ride away. London is also not too far away, so it wasn't hard to plan trips. As it is pretty much a university town, Portsmouth has genuinely great people and I have made some great friends here. It has been a rewarding experience. ”

Research degrees

The University of Portsmouth is committed to promoting the discovery, development and application of knowledge through high quality research. Research at the University of Portsmouth is world-class – with an average 40 per cent of the research rated internationally excellent or world-leading, and 78 per cent rated internationally recognised or above. This was the outcome of the national Research Assessment Exercise (RAE 2008). The research funding that follows from this performance increased by 13 per cent, above the national average of eight per cent.

What are higher degrees by research?

Research degrees are an opportunity for you to become an independent researcher in a selected topic, working closely with a University supervisory team, who will monitor, guide and advise you. You will attend research seminars and conferences, as well as lectures and courses on research methods. At the end of the period you will write up your research in a thesis and then defend your work in an oral examination carried out by a combination of internal and external examiners.

Why do a higher degree by research?

- To make a significant contribution to your field of knowledge.
- To pursue an area of interest to a great depth.
- To improve your analytical abilities and gain intellectual stimulation.

- To enhance your career prospects – in universities, research and elsewhere.
- To acquire the skills to train others in research.

What qualifications do you require to study a PhD?

- A good first degree or Master's qualification in an appropriate subject from an internationally-recognised university.
- Exceptionally, equivalent professional training and experience and/or qualifications.
- IELTS Band 7 or TOEFL IBT 79/80–105 depending upon area of research.

Finding out about specific research opportunities

You can apply straightaway using the process outlined opposite (how to apply).

If you wish to discuss the research opportunities available in our Faculty of Science, you can submit the research enquiry form at: www.port.ac.uk/scienceresearchform.

This enquiry stage allows you to consider in more detail, the academic, funding and other support that we can provide. You can also use this process to submit your CV and other supporting documents such as a draft research proposal. More information on this process can be found at: www.port.ac.uk/guidance.

How to apply

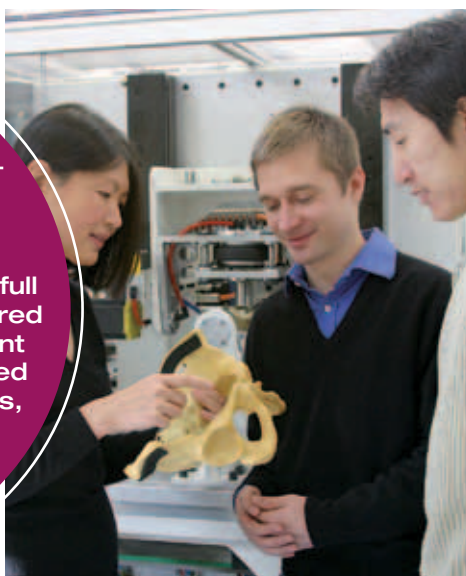
- Once you have decided or agreed with us to apply, please complete the University application form at www.port.ac.uk/onlineapplication.
- Submit this with the additional information in support of your application.
- We will acknowledge receipt of your form and supply you with a named contact person who will track and follow up your application as we process it.

For more information on research degrees in general, please visit www.port.ac.uk/research.

To find out more about the opportunities to study for a research degree in one of our academic departments, schools or institutes, please visit www.port.ac.uk/postgradresearchdegrees.

How long will it take?

Your period of registration will vary according to the degree you undertake and whether you choose to study full or part time. If you are registered as a full-time research student for a PhD, you will be expected to complete within 36 months, while a part-time research student will be expected to complete within 72 months.



How to apply

You can apply for admission to the University through the following routes:

Undergraduate

- Overseas representative (See p.60)
- UCAS: apply via www.ucas.ac.uk or call +44 (0)1242 222444

Postgraduate and research

- Overseas representative (See p.60)
- Direct: apply directly to the University via www.port.ac.uk/apply/postgraduate

General admissions criteria*

Course entry level	Criteria	English proficiency**
Foundation	<ul style="list-style-type: none"> • High School Certificate or Diploma • GCSE English, maths, physics/combined science at grade C 	<ul style="list-style-type: none"> • IELTS band 5.5 • TOEFL IBT 71 • Pearson Test of English 42–49 points
Undergraduate	<ul style="list-style-type: none"> • Minimum of two good A Levels (GCE Advanced Level) or • A recognised Access/Foundation course or • An International Baccalaureate Diploma (minimum score 24), or • Appropriate BTEC National Diploma or High School Leaving Certificate 	<ul style="list-style-type: none"> • IELTS band 6.0 • TOEFL IBT 7980 • Pearson Test of English 50–57 points
Postgraduate	<ul style="list-style-type: none"> • A good first degree from an internationally-recognised university (depending upon chosen course, minimum second-class or equivalent) 	<ul style="list-style-type: none"> • IELTS band 6.0–7.0 • TOEFL IBT 79/80–105 depending upon course • Pearson Test of English 50–72 points
Research	<ul style="list-style-type: none"> • A good first degree from an internationally-recognised university (upper second-class or equivalent) • Subjects studied for first degree should be relevant and provide a sufficient basis for postgraduate research topic • In exceptional circumstances, they have a recognised professional qualification 	<ul style="list-style-type: none"> • IELTS band 6.0–7.0 • TOEFL IBT 79/80–105 depending upon area of research • Pearson Test of English 50–72 points

*Please note, some courses require higher or more specific entry requirements.

**Other acceptable English language qualifications: GCSE English language grade C, Cambridge Certificate of Advanced English grade B

The University of Portsmouth is on the UK Border Agency's Register of Sponsors Licensed under the Points Based System. Our **Sponsor Licence Number** (SLN) on this register is **926WMQQ73**.

Portsmouth Business School

Portsmouth Business School has a strong reputation for the extent and quality of research, the high standard of teaching and the employability of our graduates. We have close involvement with business organisations throughout the region and students are encouraged and supported to enhance their employability skills through year-long work placements and volunteering opportunities.

We are a full service school offering degree awards and executive education across accounting, finance, law, business and management disciplines – most of which have been accredited by their respective professional institutions.

Recognition

In the 2009 National Student Survey, the University of Portsmouth achieved one of the highest ratings for overall student satisfaction of the south coast universities and this places us in the top 25 per cent of mainstream universities in England. In the broad business and administrative studies category, we scored 88 per cent for overall student satisfaction. Within this category we scored 100 per cent for finance and 97 per cent for accounting, which places Portsmouth in the top five universities offering these subjects. For law we scored 95 per cent and economics 83 per cent for overall student satisfaction.

Our MBA programmes have been accredited by the prestigious Association of MBAs and we are proud to be one of a small number of universities to be recognised by the Chartered Institute of Personnel and Development as a Centre of Research Excellence. We are a member of the European Foundation for Management Development. Additionally, we are able to offer our students membership of the Institute of Leadership and Management, with access to its learning resources and website.

Facilities

Our School occupies modern, purpose-built premises located in the heart of the city, which offer a computer drop-in centre, a resource centre and a mixture of IT seminar rooms, standard seminar rooms and three tiered lecture theatres. We have recently opened a mock court room enabling students to practise advocacy, the art of persuasion and to stage full-blown mock trials.

Employment opportunities

Our courses are constantly updated and revised to ensure that when graduates enter the world of work, they will have a thorough grasp of the workings of modern business. Many of our programmes include the development of appropriate skills such as communication, teamwork,

career planning and time management. They have a strong contemporary feel and relate the theoretical explanation of business to the practical issues facing managers in the twenty-first century.

List of departments

Department of Accounting and Finance
Department of Economics
Department of Human Resource and Marketing Management
School of Law
Department of Strategy and Business Systems

A sandwich course includes a period of time spent on a 'placement', usually in industry, in order to gain experience and learn in a practical setting.

Please note: all fees quoted are annual fees and may be subject to change. Please contact the University for confirmed fees for 2011 entry.

Number of students:
4,588
Number of staff:
282

E: bus.admissions@port.ac.uk
W: www.port.ac.uk/pbs

Department of Accounting and Finance

Course	Duration	Mode	IELTS	Tuition fee	EU fee
BA Accountancy and Financial Management	2 years	Full-time top up	6.0	£9,600	Please see p.18-19 for details
BA Accountancy Studies	2 years	Full-time top up	6.0	£9,600	
BA Accounting	3/4 years	Sandwich (optional)	6.0	£9,600	
BA Accounting and Business	3/4 years	Sandwich (optional)	6.0	£9,600	
BA Accounting with Finance	3/4 years	Sandwich (optional)	6.0	£9,600	
BSc Finance	3/4 years	Sandwich (optional)	6.0	£9,600	
BA Finance and Business	3/4 years	Sandwich (optional)	6.0	£9,600	
BA Finance with Business English	1 or 2 years	Full-time top up	6.0*	£8,400	
BA International Finance and Trade	3/4 years	Sandwich (optional)	6.0	£9,600	
MSc Finance	15 months	Full time	6.5	£10,100	
MSc Financial Decision Analysis	15 months	Full time	6.5	£10,100	
MSc Forensic Accounting	15 months or 3 years	Full time or part-time distance learning	6.5	£10,100 £3,220	

Department of Economics

Course	Duration	Mode	IELTS	Tuition fee	EU fee
BA Applied Economics	3/4 years	Sandwich (optional)	6.5	£9,600	Please see p.18-19 for details
BSc Business Economics	3/4 years	Sandwich (optional)	6.5	£9,600	
BA Business Economics with Business Law	3/4 years	Sandwich (optional)	6.5	£9,600	
BSc Economics	3/4 years	Sandwich (optional)	6.5	£9,600	
BSc Economics, Finance and Banking	3/4 years	Sandwich (optional)	6.5	£9,600	
MSc Business Economics	1 year	Full time	6.5	£10,100	
MSc Business Economics, Finance and Banking	1 year	Full time	6.5	£10,100	
MSc Cultural and Tourism Management	1 year	Full time	6.5	£10,100	
MA Economics for Business	1 year	Full time	6.5	£10,100	
MA International Business and English	1 year	Full time	6.5	£10,100	
MSc Sustainable Resource Management	1 year	Full time	6.5	£10,100	

*Courses that combine subject study with continued development of English require different IELTS scores depending on the year of entry. For more information see www.port.ac.uk/courseswithenglish.

Department of Human Resource and Marketing Management

Course	Duration	Mode	IELTS	Tuition fee	EU fee
BA Business Administration	3 years	Full time	6.0	£9,600	Please see p.18-19 for details
BA Business Studies	4 years	Sandwich (mandatory)	6.0	£9,600	
BA Business with English	2 years	Full-time top up	6.0*	£8,400	
BA Hospitality Management	4 years	Sandwich (mandatory)	6.0	£10,100	
BA Hospitality Management with Tourism	4 years	Sandwich (mandatory)	6.0	£10,100	
BA Human Resource Management	3/4 years	Sandwich (optional)	6.0	£9,600	
BA Human Resource Management with Psychology	3/4 years	Sandwich (optional)	6.0	£9,600	
BA Marketing	3/4 years	Sandwich (optional)	6.0	£9,600	
BA Marketing with Business English	2 years	Full-time top up	6.0*	£8,400	
BA Marketing with Psychology	3/4 years	Sandwich (optional)	6.5	£9,600	
MSc Human Resource Management	15 months	Full time	6.5	£10,100	
MSc International Human Resource Management	15 months	Full time	6.5	£10,100	
MA Marketing	15 months	Full time	6.5	£10,100	
MA Marketing (Digital Media)	15 months	Full time	6.5	£10,100	



School of Law

Course	Duration	Mode	IELTS	Tuition fee	EU fee
LLB Law	3/4 years	Sandwich (optional)	6.0	£9,600	Please see p.18-19 for details
LLB Law and Criminology	3/4 years	Sandwich (optional)	6.0	£9,600	
LLB Law and European Studies	3/4 years	Sandwich (optional)	6.0	£9,600	
LLB Law and International Relations	3/4 years	Sandwich (optional)	6.0	£9,600	
LLB Law with Business	3/4 years	Sandwich (optional)	6.0	£9,600	
BA Law with Business English	3 years	Full time	5.0*	£8,400	
LLM Corporate Governance and Law/Grad ICOSA	15 months	Full time	6.5	£10,100	
LLM Employment Law	15 months	Full time	6.5	£10,100	
LLM International Business Law	15 months	Full time	6.5	£10,100	
LLM Law	15 months	Full time	6.5	£10,100	

Department of Strategy and Business Systems

Course	Duration	Mode	IELTS	Tuition fee	EU fee
HND Business	2 years	Full time	6.0	£9,600	Please see p.18-19 for details
BA Business Enterprise Development	3/4 years	Sandwich (optional)	6.0	£9,600	
BA Business Enterprise Systems	3/4 years	Sandwich (optional)	6.0	£9,600	
BSc Business Information Technology	3/4 years	Sandwich (optional)	6.0	£9,600	
BA European Business (UK to France)	4 years	Sandwich (mandatory)	6.0	£9,600	
BA European Business (UK to Germany)	4 years	Sandwich (mandatory)	6.0	£9,600	
BA European Business (UK to Spain)	4 years	Sandwich (mandatory)	6.0	£9,600	
BA International Business Studies	4 years	Sandwich (mandatory)	6.0	£9,600	
MSc Business and Management	15 months	Full time	6.5	£10,100	
MBA Business Administration (International)	15 months	Full time	6.5	£16,300	
MSc Project Management	15 months	Full time	6.5	£10,100	
MSc Risk Management	15 months	Full time	6.5	£10,100	
MSc Strategic Quality Management	15 months or 30 months	Full time or part-time distance learning	6.5	£10,100 £3,220	

The Faculty of Creative and Cultural Industries

The creative and cultural industries are central to the new world economy. The University of Portsmouth is at the heart of the booming creative and cultural industries in the south east of England, itself one of the most successful and dynamic regional economies in the UK.

We have a long history of excellence in the arts and technologies and more importantly, we have a tradition of sharing and developing this expertise with global partners.

Recognition

We pride ourselves on our extensive range of courses, which fully exploit our links with other departments, the community and organisations in the UK and abroad. These partnerships mean that many courses offer visits from distinguished artists and industrial placements.

Our BA (Hons) Architecture course is accredited by the Royal Institute of British Architects (RIBA) and prescribed by the Architects Registration Board (ARB), and is primarily designed for those seeking to prepare for a professional career in architecture. It therefore leads to exemption from the RIBA's Part 1 examination.

CCI research lies at the cutting edge of the creative industries, combining theoretical advances with practical applications through Knowledge Transfer. This research is organised within three centres: Centre for Art, Architecture and Design; Centre for Cultural and Creative Research; Centre for Cultural and Industrial Technologies Research.

Facilities

We strongly believe in showcasing the work of our students and supporting their professional practice and we have funding to support students who are organising an exhibition, fashion show, theatre production, installation or musical event.

The Faculty has its own exhibition and event facilities to showcase the work of staff, students, alumni and visiting artists. Other facilities include studios, computer suites with both Mac and PC systems, specialist multimedia solutions, reprographic facilities, web-tv, motion capture and a virtual reality suite.

Employment opportunities

Our courses engage directly and dynamically with the things that shape our everyday world, providing our students with valuable professional experience. We have strong links with industry, keeping our courses up-to-date with current practices and developments, which enable students to gain the essential commercial experience required by today's employers.

The south east of the UK is second only to London in terms of both the financial turnover and the number of jobs the creative industries supports, with 97.2 per cent of graduates from creative practice-based courses at Portsmouth gaining employment after completing their course.

List of departments

Portsmouth School of Architecture
Portsmouth School of Art, Design and Media
School of Creative Arts, Film and Media
School of Creative Technologies
Portsmouth Centre for Enterprise
Institute of Industrial Research

To view a selection of student's creative work visit
www.port.ac.uk/showcase/ccf

A sandwich course includes a period of time spent on a 'placement', usually in industry, in order to gain experience and learn in a practical setting.

Please note: all fees quoted are annual fees and may be subject to change. Please contact the University for confirmed fees for 2011 entry.

Number of students:
3,229
Number of staff:
222

E: create.admissions@port.ac.uk
W: www.port.ac.uk/ccf

School of Architecture

Course	Duration	Mode	IELTS	Tuition fee	EU fee
BA Architecture	3 years	Full time	6.0	£9,600	Please see p.18-19 for details
BA Interior Design	3 years	Full time	6.0	£9,600	
Diploma in Architecture	2 years	Full time	6.0	£9,600	
MSc History Building Conservation	1 year	Full time	6.0	£9,600	
MA Interior Design	1 year	Full time	6.5	£9,600	
MA Professional Practice: Architecture	1 year	Part time	6.5	£9,600	
MA Sustainable Architecture	1 year	Full time	6.5	£9,600	
MA Urban Design	1 year	Full time	6.5	£9,600	

School of Art, Design and Media

Course	Duration	Mode	IELTS	Tuition fee	EU fee
Diploma ABC Diploma Foundation Studies (Art, Design and Media)	1 year	Full time	6.0	£5,045	Please see p.18-19 for details
BA Graphic Design with English	1 year	Full-time top up	6.0*	£9,600	
BA Fashion and Textile Design with Enterprise	3 years	Full time	6.0	£9,600	
BA Contemporary Fine Art	3 years	Full time	6.0	£9,600	
BA Graphic Design	3 years	Full time	6.0	£9,600	
BA Illustration	3 years	Full time	6.0	£9,600	
BA Photography	3 years	Full time	6.0	£9,600	
MA Design for Digital Media	1 year	Full time	6.5	£9,600	
MA Fine Art	1 year	Full time	6.5	£9,600	
MA Graphic Design	1 year	Full time	6.5	£9,600	

*Courses that combine subject study with continued development of English require different IELTS scores depending on the year of entry. For more information see www.port.ac.uk/courseswithenglish.

School of Creative Arts, Film and Media

Course	Duration	Mode	ELTS	Tuition fee	EU fee
BA Creative and Media Writing	3 years	Full time	6.0	£9,600	
BA Creative and Performing Arts	3 years	Full time	6.0	£9,600	
BA Drama and Performance	3 years	Full time	6.0	£9,600	
BA English and Creative Writing	3 years	Full time	6.0	£9,600	
BA English and Drama	3 years	Full time	6.0	£9,600	
BA English and Film Studies	3 years	Full time	6.0	£9,600	
BA Film and Television Studies	3 years	Full time	6.0	£9,600	
BA Film Studies	3 years	Full time	6.0	£9,600	
BA Film Studies and Creative Writing	3 years	Full time	6.0	£9,600	
BA Media Studies	3 years	Full time	6.0	£9,600	
BA Media Studies and Creative Writing	3 years	Full time	6.0	£9,600	
BA Media Studies and Entertainment Technology	3 years	Full time	6.0	£9,600	
MA Creative Writing	1 year	Full time	6.5	£9,600	
MA Film and Television Studies	1 year	Full time	6.5	£9,600	

Please see p.18-19 for details

Find out more about the courses the Faculty of Creative and Cultural Industries offers at www.port.ac.uk/courses





School of Creative Technologies

Course	Duration	Mode	IELTS	Tuition fee	EU fee
BSc Animation	3/4 years	Sandwich (optional)	6.0	£10,100	Please see p.18-19 for details
BSc Computer Animation	3/4 years	Sandwich (optional)	6.0	£9,600	
BSc Computer Games Technology	3/4 years	Sandwich (optional)	6.0	£10,100	
BSc Creative Computing Technologies	1 year	Full-time top up	6.0	£10,100	
BSc Digital Media	3/4 years	Sandwich (optional)	6.0	£10,100	
BSc Computer Games Enterprise	3/4 years	Sandwich (optional)	6.0	£10,100	
BSc Entertainment Technology	3/4 years	Sandwich (optional)	6.0	£10,100	
BSc Music and Sound Technology	3/4 years	Sandwich (optional)	6.0	£10,100	
BA Television and Film Production	3/4 years	Sandwich (optional)	6.0	£10,100	
BSc Television and Broadcasting	3/4 years	Sandwich (optional)	6.0	£10,100	
MSc Computational Sound	1 year	Full time	6.5	£10,100	
MSc Computer Animation	1 year	Full time	6.5	£10,100	
MSc Computer Games Technology	1 year	Full time	6.5	£10,100	
MSc Digital Media	1 year	Full time	6.5	£10,100	

The Faculty of Humanities and Social Sciences

The Faculty of Humanities and Social Sciences offers international students a wide range of undergraduate and postgraduate programmes in disciplines across the range of social sciences and humanities. Our students can expect a high-quality learning experience, as all teaching and supervision is undertaken by specialist staff, many of whom are respected researchers in their fields, and we regularly receive very positive feedback from student surveys.

Subject areas within the faculty include area studies, criminology, education, English language, English literature, history, journalism, international relations, linguistics, modern languages, politics, public administration, sociology and translation studies.

We have links with many European and international universities and institutions in Germany, the Netherlands, the United States and China.

Recognition

Our Centre for European and International Studies Research (CEISR) is the UK's largest centre for research into European issues, and has achieved international excellence for several of its research strands, including politics, culture, history and sociology. In the most recent official assessments, the 2008 Research Assessment Exercise, CEISR was rated top in the UK for research in European Studies.

The School of Education and Continuing Studies continues to achieve very good results in Ofsted inspections.

We also work closely with British public sector organisations at the highest level, including the police force, the probation service, counter-fraud professionals and international partners including universities from China to Mexico.

Facilities

Throughout the Faculty, we have invested in the creation of facilities fit for the twenty-first century. IT provision for lecturers and students, including online learning systems, is comprehensive. Each department has its own specialised facilities, including Forensics House, where criminology students can learn about techniques for the detection of crime, our state-of-the-art newsroom that allows our journalism students to practise their skills in real-world conditions and multimedia digital classrooms for our modern languages students.

Employment opportunities

Degrees in this Faculty are designed to improve your skills for the job you want, as well as your knowledge of your chosen discipline, and this makes our graduates highly employable.

Our students have gone on to roles in education and training, the police, forensics, media, journalism, government and politics, social and community work, heritage, healthcare, HR, advertising, marketing, financial services and many others.

List of departments

Institute of Criminal Justice Studies
School of Education and Continuing Studies
School of Languages and Area Studies
School of Social, Historical and Literary Studies

A sandwich course includes a period of time spent on a 'placement', usually in industry, in order to gain experience and learn in a practical setting.

Please note: all fees quoted are annual fees and may be subject to change. Please contact the University for confirmed fees for 2011 entry.

Number of students: 5,199
Number of staff: 250

E: humanities.admissions@port.ac.uk

W: www.port.ac.uk/fhss

Institute of Criminal Justice Studies

Course	Duration	Mode	IELTS	Tuition fee	EU fee
BSc Counter Fraud and Criminal Justice Studies	4 years	Part-time distance learning	6.0	£3,220	Please see p.18-19 for details
BSc Crime and Criminology	4/5 years	Part-time distance learning	6.0	£3,220	
BSc Criminology and Criminal Justice	3 years	Full time	6.0	£9,600	
BSc Criminology and Forensic Studies	3 years	Full time	6.0	£9,600	
BSc Criminology with Psychology	3 years	Full time	6.0	£9,600	
BSc Risk and Security Management	4/5 years	Part-time distance learning	6.0	£3,220	
MSc Counter Fraud and Counter Corruption Studies	2 years	Part-time distance learning	6.5	£3,220	
MSc Criminology and Community Safety	2 or 3 years	Full time and distance learning	6.5	£9,600 £3,220	
MSc Criminology and Crime Cultures	1 year	Full time	6.5	£9,600	
MSc Criminology and Criminal Justice	1, 2 or 3 years	Full time and distance learning	6.5	£9,600 £3,220	
MSc Criminology and Criminal Psychology	1, 2 or 3 years	Full time and distance learning	6.5	£9,600 £3,220	
MSc International Criminal Justice	2 or 3 years	Part-time distance learning	6.5	£3,220	
MSc Policing, Policy and Leadership	2 or 3 years	Part-time distance learning	6.5	£3,220	
MSc Security Management	1 or 2 years	Full time and distance learning	6.5	£9,600 £3,220	

School of Education and Continuing Studies

Course	Duration	Mode	IELTS	Tuition fee	EU fee
BA Childhood and Youth Studies	3 years	Full time	6.0	£9,600	Please see p.18-19 for details
BA Early Childhood Studies	3 years	Full time	6.0	£9,600	
MSc Education and Training Management	1 or 2 years	Full time	6.5	£9,600	

School of Languages and Area Studies

Course	Duration	Mode	IELTS	Tuition fee	EU fee
BA American Studies	3 years	Full time	6.0	£9,600	
BA American Studies and History	3 years	Full time	6.0	£9,600	
BA Applied Languages	4 years	Full time	6.0	£9,600	
BA Combined Modern Languages	4 years	Full time	6.0	£9,600	
BA Communication and English Studies	3 years	Full time	5.0*	£8,400	
BA English and American Studies	3 years	Full time	6.0	£9,600	
BA English Language	3 years	Full time	6.0	£9,600	
BA English Studies	3 years	Full time	5.0*	£8,400	
BA European Studies	3 years	Full time	6.0	£9,600	
BA European Studies and International Relations	3 years	Full time	6.0	£9,600	
BA French Studies	4 years	Full time	6.0	£9,600	
BA German Studies	4 years	Full time	6.0	£9,600	
BA International Business English	3 years	Full time	5.0*	£8,400	
BA International Development Studies	3 years	Full time	6.0	£9,600	
BA International Development Studies and Languages	4 years	Full time	6.0	£9,600	
BA International Relations and Languages	4 years	Full time	6.0	£9,600	
BA International Trade and English	3 years	Full time	5.0*	£8,400	
BA International Trade, Logistics and English	1 year	Full-time top up	6.0*	£8,400	
BA Languages and European Studies	4 years	Full time	6.0	£9,600	
BA Languages and Law	4 years	Full time	6.0	£9,600	
BA Logistics and Business English	1 year	Full-time top up	6.0*	£8,400	
BA Spanish and Latin American Studies	4 years	Full time	6.0	£9,600	
BA Spanish Studies	4 years	Full time	6.0	£9,600	
MA/PgD Applied Linguistics and Teaching English as a Foreign Language	1 year	Full time	7.0	£9,600	
MA Applied Linguistics and Teaching English as a Second Language	3 years	Part-time distance learning	7.0	£3,220	

Please see p.18-19 for details

*Courses that combine subject study with continued development of English require different IELTS scores depending on the year of entry. For more information see www.port.ac.uk/courseswithenglish.

Course	Duration	Mode	IELTS	Tuition fee	EU fee
MA Communication and Language Skills	1 year	Full time	6.5	£9,600	Please see p.18-19 for details
MA Francophone Africa	1 year	Full time	6.5	£9,600	
MA Technical Communication	1 year	Full time	7.0	£9,600	
MA Translation and Technical Communication	1 year	Full time	7.0	£9,600	
MA/PgD Translation Studies	1 year	Full time	7.0	£9,600	
MA Translation Studies	3 years	Part-time distance learning	7.0	£3,220	

School of Social, Historical and Literary Studies

Course	Duration	Mode	IELTS	Tuition fee	EU fee
BA English and History	3 years	Full time	6.0	£9,600	Please see p.18-19 for details
BA English and Media Studies	3 years	Full time	6.0	£9,600	
BA English Language and Literature	3 years	Full time	6.0	£9,600	
BA English Literature	3 years	Full time	6.0	£9,600	

Find out more about the courses the Faculty of Humanities and Social Sciences offers at www.port.ac.uk/courses



School of Social, Historical and Literary Studies continued.

Course	Duration	Mode	IELTS	Tuition fee	EU fee
BA English with Psychology	3 years	Full time	6.0	£9,600	Please see p.18-19 for details
BA History	3 years	Full time	6.0	£9,600	
BA History and Politics	3 years	Full time	6.0	£9,600	
BA International Relations	3 years	Full time	6.0	£9,600	
BA International Relations and History	3 years	Full time	6.0	£9,600	
BA International Relations and Politics	3 years	Full time	6.0	£9,600	
BA Journalism	3 years	Full time	7.0	£9,600	
BA Journalism and English Language	3 years	Full time	7.0	£9,600	
BA Journalism and English Literature	3 years	Full time	7.0	£9,600	
BA Journalism and International Relations	3 years	Full time	7.0	£9,600	
BA Journalism and Media Studies	3 years	Full time	7.0	£9,600	
BA Politics	3 years	Full time	6.0	£9,600	
BA Politics and Sociology	3 years	Full time	6.0	£9,600	
BSc Sociology	3 years	Full time	6.0	£9,600	
BSc Sociology and Criminology	3 years	Full time	6.0	£9,600	
BA Sociology and Media Studies	3 years	Full time	6.0	£9,600	
BSc Sociology with Psychology	3 years	Full time	6.0	£9,600	
MA European Law and Policy	1 year	Full time	6.5	£9,600	
MA European Studies	1 year	Full time	6.5	£9,600	
MA History of War, Culture and Society	1 year	Full time	6.5	£9,600	
MA International Relations and European Studies	1 year	Full time	6.5	£9,600	
MA Literature, Culture and Identity	1 year	Full time	7.0	£9,600	
MA Memory Cultures	1 year	Full time	6.5	£9,600	
MPA Public Administration	1 year	Full time	6.5	£9,600	

The Faculty of Science

The Faculty of Science has a longstanding and well-deserved reputation for excellence in both research and teaching. We offer a wide range of full-time and sandwich undergraduate honours degrees, along with other opportunities ranging from postgraduate taught degrees to MPhil and PhD degrees by research.

The Faculty is particularly aware of the need for active links between undergraduate programmes and the world of work. We have close working relationships with many industrial and professional employers, and offer effective preparation for careers within the science field and beyond.

You will receive an excellent scientific education from academics who are leading researchers in their field and committed teachers alike, equipping you with the theoretical knowledge and practical skills that will allow you to excel.

Recognition

The breadth of subject areas within the Faculty of Science is reflected in its research programmes. Research in the Faculty is world-class with over 80 per cent of the research recognised internationally.

In the last Research Assessment Exercise (RAE) the research submitted to the Allied Health Professions and Studies Panel was in the national top three for research quality. This area of research is based in the Institute of Biomedical and Biomolecular Sciences (IBBS). The majority of the research was rated internationally excellent or world-leading in the RAE 2008. IBBS is a multidisciplinary grouping that brings together researchers from the Schools of Biological Sciences, Pharmacy and Biomedical Sciences, and Health Sciences and Social Work.

Other areas of research in the Faculty were also very highly rated.

Facilities

You will learn in modern teaching spaces with excellent facilities, which include climatic chambers and an immersion pool for sports science students, specialised laboratories for psychological research, a new fully stocked model pharmacy for students of pharmacy and biomedical sciences, and well equipped laboratories and simulation suites for healthcare students.

Employment opportunities

The Faculty has active links with the world of work and close working relationships with many industrial and professional employers. Many of the courses are recognised and accredited by professional bodies such as the Royal Pharmaceutical Society of Great Britain, the Institute of Biomedical Science and the British Psychological Society and the General Social Care Council.

List of departments

School of Biological Sciences
Department of Sport and Exercise Science
Department of Geography
School of Pharmacy and Biomedical Sciences
School of Health Sciences and Social Work
School of Earth and Environmental Sciences
Department of Psychology

Please note, some courses in the Faculty of Science are externally funded and may not be able to accept international students.

A sandwich course includes a period of time spent on a 'placement', usually in industry, in order to gain experience and learn in a practical setting.

Please note: all fees quoted are annual fees and may be subject to change. Please contact the University for confirmed fees for 2011 entry.

Number of students:
4,731

Number of staff:
437

E: sci.admissions@port.ac.uk
W: www.port.ac.uk/facultyofscience

School of Biological Sciences

Course	Duration	Mode	IELTS	Tuition fee	EU fee
BSc Biochemistry and Genome Science	3 years	Full time	6.0	£11,000	Please see p.18-19 for details
BSc Biology	3 years	Full time	6.0	£11,000	
BSc Forensic Biology	3 years	Full time	6.0	£11,000	
BSc Marine Biology	3 years	Full time	6.0	£11,000	
MSc Applied Aquatic Biology	1 year	Full time	6.5	£11,000	

Department of Sport and Exercise Science

Course	Duration	Mode	IELTS	Tuition fee	EU fee
BSc Sports Development	3 years	Full time	6.0	£9,600	Please see p.18-19 for details
BSc Sports Business Management	3 years	Full time	5.0*	£8,400	
BSc Sport and Exercise Science	3 years	Full time	6.0	£9,600	
MSc Clinical Exercise Science	1 year	Full time	7.0	£9,885	
MSc Sports Performance	1 year	Full time	6.5	£9,600	

Department of Geography

Course	Duration	Mode	IELTS	Tuition fee	EU fee
BA/BSc Environmental Geography	3 years	Full time	6.0	£9,600	Please see p.18-19 for details
BSc Geographical Information Science	3 years	Full time	6.0	£9,600	
BA Geography	3 years	Full time	6.0	£9,600	
BSc Geography	3 years	Full time	6.0	£9,600	
BSc Human Geography	3 years	Full time	6.0	£9,600	
BSc Physical Geography	3 years	Full time	6.0	£9,600	
MSc Coastal and Marine Resource Management	1 year	Full time	6.0	£9,600	
MA/MSc Geography (by Project)	1 year	Full time	6.5	£9,600	
MSc Geographical Information Systems	1 year	Full time	6.5	£9,600	

*Courses that combine subject study with continued development of English require different IELTS scores depending on the year of entry. For more information see www.port.ac.uk/courseswithenglish.

School of Pharmacy and Biomedical Sciences

Course	Duration	Mode	IELTS	Tuition fee	EU fee
BSc Applied Biomedical Science*	3 years	Full time	6.0	£11,000	Please see p.18-19 for details
BSc Biomedical Science	3 years	Full time	6.0	£11,000	
MPharm Pharmacy**	4 years	Full time	6.5	£11,000	
BSc Pharmacology	3 years	Full time	6.0	£11,000	
MSc Biomedicine	1 year	Full time	6.5	£12,000	

* Students can only enter this course after completing the first year of BSc (Hons) Biomedical Science

** Please note, MPharm Pharmacy has a limited number of spaces available for international students

Department of Psychology

Course	Duration	Mode	IELTS	Tuition fee	EU fee
BSc Forensic Psychology	3 years	Full time	6.0	£11,000	Please see p.18-19 for details
BSc Psychology	3 years	Full time	6.0	£11,000	
MSc Applied Psychology of Intellectual Disabilities	2 years	Part-time distance learning	6.5	£3,400	
MSc Child Forensic Studies (Psychology and Law)	4 years	Part-time distance learning	6.5	£3,400	
MSc Forensic Psychology	1 year	Full time	6.5	£11,000	
MSc Psychological Research Methods	1 year	Full time	6.5	£11,000	
MSc Psychological Research Methods in Communication and Language	1 year	Full time	6.5	£11,000	
MSc Psychological Research Methods in the Study of Emotion	1 year	Full time	6.5	£11,000	
MSc Psychological Research Methods: Criminal Investigative Psychology	1 year	Full time	6.5	£11,000	

School of Earth and Environmental Sciences

Course	Duration	Mode	IELTS fee	Tuition fee	EU fee
BSc Applied Physics	3 years	Full time	6.0	£11,000	Please see p.18-19 for details
BSc Earth Sciences	3 years	Full time	6.0	£11,000	
BEng Engineering Geology and Geotechnics	3/4 years	Sandwich (optional)	6.0	£11,000	

School of Earth and Environmental Sciences continued.

Course	Duration	Mode	IELTS	Tuition fee	EU fee
BSc Environmental Science	3 years	Full time	6.0	£11,000	Please see p.18-19 for details
BSc Geological Hazards	3 years	Full time	6.0	£11,000	
BSc Geology	3 years	Full time	6.0	£11,000	
BSc Marine Environmental Science	3 years	Full time	6.0	£11,000	
BSc Palaeobiology and Evolution	3 years	Full time	6.0	£11,000	
MSc Contaminated Land	1 year	Full time	6.5	£12,200	
MSc Crisis and Disaster Management	1 year	Full time	6.5	£11,700	
MSc Engineering Geology	1 year	Full time	6.5	£12,200	
MSc Geological and Environmental Hazards	1 year	Full time	6.5	£12,200	

School of Health Sciences and Social Work

Course	Duration	Mode	IELTS	Tuition fee	EU fee
BSc Acute Clinical Healthcare	1 year	Full-time top up	6.0	£9,600	Please see p.18-19 for details
BSc Clinical Health Science	3 years	Full time	6.0	£10,100	
BSc Social Work	3 years	Full time	6.0	£10,100	
MSc Advanced Professional Practice in Healthcare	1 year	Full time	7.0	£10,100	
MSc Social Work	2 years	Full time	6.5	£9,600	

The Faculty of Technology

The Faculty of Technology offers a varied portfolio of courses in a wide range of technology-related disciplines including computing, civil engineering, electronic and computer engineering, mechanical and design engineering and mathematics. Many of our courses are professionally accredited and offer real-world experience from an industrial placement.

All of our departments are actively involved in many exciting areas of research, development and knowledge transfer. The involvement of our staff in research and knowledge transfer ensures that our courses are progressive, relevant and intellectually stimulating.

Recognition

All areas of the Faculty are actively involved in many exciting areas of research and knowledge transfer. In December 2008, the nationwide Research Assessment Exercise recognised the international significance of our research in applied mathematics, mechanical engineering and computer science. In applied mathematics, we were rated among the top four universities in the UK.

The Faculty has two centres of research excellence: the Institute of Cosmology and Gravitation, which is internationally known for its work on theory and observations of the Universe, and the Mechanical Behaviour of Materials Group based in the Department of Mechanical and Design Engineering, which is one of the leading groups in the UK in aeroengine fatigue.

Facilities

A range of facilities are provided to support students' learning experiences. Computer suites and associated software are regularly upgraded to reflect current industrial practice and developing course requirements, and extended opening hours are offered.

In addition to the normal academic support, dedicated tutor centres, a Maths Café, computer and electronic surgeries and a Cisco networking club are available to support your needs throughout your studies.

There are a range of cutting-edge laboratories and workshops throughout the engineering departments, giving you access to the equipment you need to complete your studies.

Employment opportunities

The Faculty has a strong international profile and many of our courses attract professional recognition. Industrial placements are a key feature of our undergraduate degrees. Many of our full-time undergraduate programmes incorporate an optional placement year, providing you with an excellent opportunity to gain high level experience, an insight into a particular job role and make useful contacts.

List of departments

School of Civil Engineering and Surveying
School of Computing
Institute of Cosmology and Gravitation
Department of Electronic and Computer Engineering
Learning at Work
Department of Mathematics
Department of Mechanical and Design Engineering

A sandwich course includes a period of time spent on a 'placement', usually in industry, in order to gain experience and learn in a practical setting.

Please note: all fees quoted are annual fees and may be subject to change. Please contact the University for confirmed fees for 2011 entry.

Number of students:
3,857
Number of staff:
283
E: technology-admissions@port.ac.uk
W: www.port.ac.uk/tech

School of Civil Engineering and Surveying

Course	Duration	Mode	IELTS	Tuition fee	EU fee
BEng Civil Engineering	3/4 years	Sandwich (optional)	6.0	£11,000	Please see p.18-19 for details
MEng Civil Engineering	4/5 years	Sandwich (optional)	6.0	£11,000	
BEng Construction Engineering Management	3/4 years	Sandwich (optional)	6.0	£11,000	
BSc Property Development	3 years	Full time	6.0	£11,000	
BSc Property Development with Quantity Surveying	3 years	Full time	6.0	£11,000	
MSc Civil Engineering	1 year	Full time	6.0	£11,000	
MSc Civil Engineering with Environmental Engineering	1 year	Full time	6.0	£11,000	
MSc Civil Engineering with Geotechnical Engineering	1 year	Full time	6.0	£11,000	
MSc Civil Engineering with Structural Engineering	1 year	Full time	6.0	£11,000	
MSc Construction Project Management	1 year	Full time	6.0	£11,000	
PgC Environmental Management	1 year	Part-time distance learning	6.0	£tbc	
PgC Occupational Health and Safety Management	1 year	Part-time distance learning	6.0	£tbc	
PgC Occupational Hygiene	1 year	Part-time distance learning	6.0	£tbc	
MSc Occupational and Environmental Health and Safety Management	3 years	Part-time distance learning	6.0	£tbc	
MSc Property Development	1 year	Full time	6.0	£11,000	
MSc Quantity Surveying	1 year	Full time	6.0	£11,000	

Department of Electronic and Computer Engineering

Course	Duration	Mode	IELTS	Tuition fee	EU fee
BEng Communication Systems	3/4 years	Sandwich (optional)	6.0	£11,000	Please see p.18-19 for details
MEng Communication Systems	4/5 years	Sandwich (optional)	6.0	£11,000	
BEng Computer Engineering	3/4 years	Sandwich (optional)	6.0	£11,000	
MEng Computer Engineering	4/5 years	Sandwich (optional)	6.0	£11,000	
BSc Computer Network Management and Design	3/4 years	Sandwich (optional)	6.0	£11,000	
BEng Electronic Engineering	3/4 years	Sandwich (optional)	6.0	£11,000	

Course	Duration	Mode	IELTS	Tuition fee	EU fee
MEng Electronic Engineering	4/5 years	Sandwich (optional)	6.0	£11,000	Please see p.18-19 for details
BEng Electronic Systems Engineering	1/2 years	Full time or part-time distance learning top up	6.0	£11,000 £tbc	
BEng Internet Engineering	3/4 years	Sandwich (optional)	6.0	£11,000	
BSc Internet Technology	3/4 years	Sandwich (optional)	6.0	£11,000	
MSc Communication Network Planning and Management	12/16 months	Full time	6.0	£11,000	
MSc Communication Systems Engineering	12/16 months	Full time	6.0	£11,000	
MSc Computer Network Administration and Management	12/16 months	Full time	6.0	£11,000	
MSc Electronic Engineering	12/16 months	Full time	6.0	£11,000	

Department of Mathematics

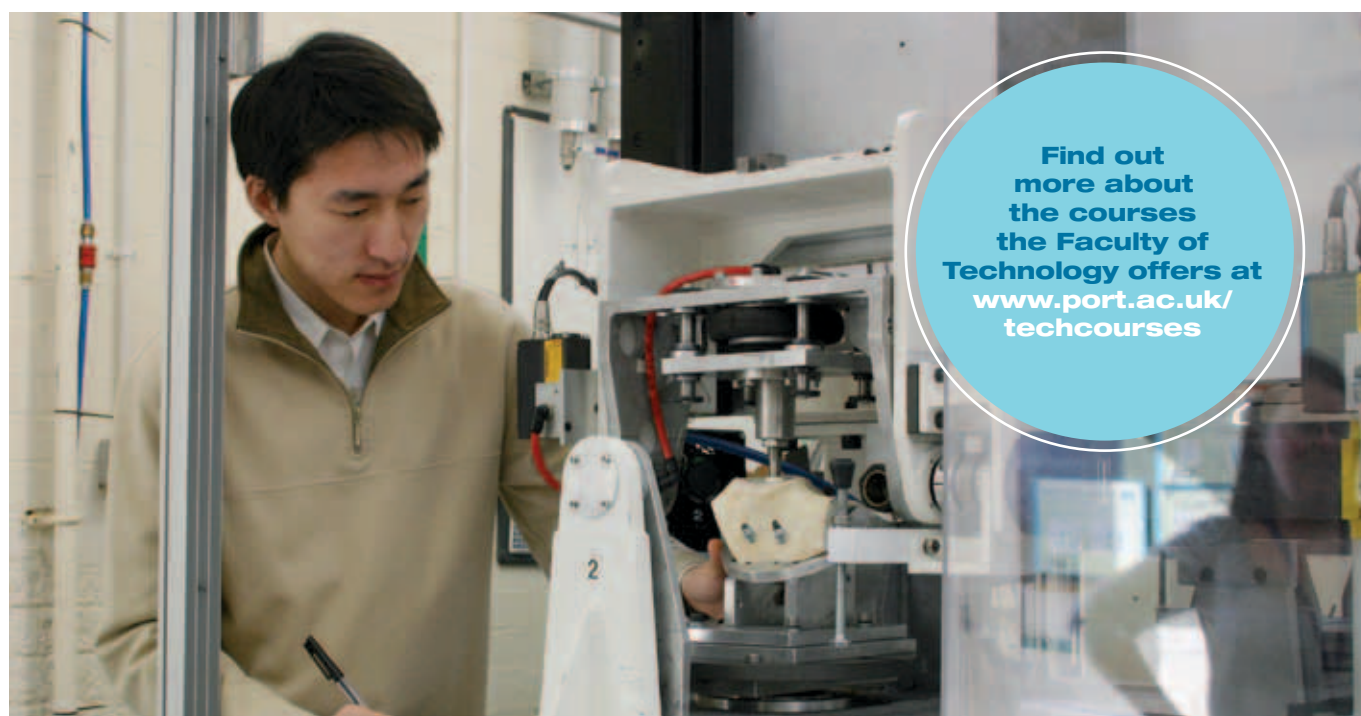
Course	Duration	Mode	IELTS	Tuition fee	EU fee
BSc Logistics and Transportation	1 year	Full-time top up	6.0	£10,000	Please see p.18-19 for details
BSc Mathematics	3/4 years	Sandwich (optional)	6.0	£10,000	
BSc Mathematics for Finance and Management	3/4 years	Sandwich (optional)	6.0	£10,000	
BSc Mathematics with Statistics	3/4 years	Sandwich (optional)	6.0	£10,000	

Department of Mechanical and Design Engineering

Course	Duration	Mode	IELTS	Tuition fee	EU fee
BSc Computer Aided Product Design	3/4 years	Sandwich (optional)	6.0	£11,000	Please see p.18-19 for details
BEng Engineering and Technology	4/5 years	Sandwich (optional)	5.5	£11,000	
BSc Marine Sports Technology	3/4 years	Sandwich (optional)	6.0	£11,000	
BEng Mechanical and Manufacturing Engineering	3/4 years	Sandwich (optional)	6.0	£11,000	
BEng Mechanical and Manufacturing Engineering	1/2 years	Full or part-time distance learning top up	6.0	£tbc	
BSc Mechanical and Manufacturing Engineering	1 year	Full-time top up	6.0	£11,000	
BEng Mechanical Engineering	3/4 years	Sandwich (optional)	6.0	£11,000	
MEng Mechanical Engineering	4/5 years	Sandwich (optional)	6.0	£11,000	
BEng Petroleum Engineering	3/4 years	Sandwich (optional)	6.0	£11,000	
BSc Product Design and Innovation	3/4 years	Sandwich (optional)	6.0	£11,000	
MSc Advanced Manufacturing Technology	1 year	Full time	6.0	£11,000	
MSc Logistics and Optimisation	1 year	Full time	6.0	£11,000	
MSc Mechanical Engineering	1 year	Full time	6.0	£11,000	
MSc Technology Management	1 year	Full time	6.0	£11,000	

School of Computing

Course	Duration	Mode	IELTS	Tuition fee	EU fee
BSc Business Information Systems	3/4 years	Sandwich (optional)	6.0	£11,000	Please see p.18-19 for details
BSc Business Information Systems	2 years	Part-time distance learning top up	6.0	£tbc	
BSc Computer Science	3/4 years	Sandwich (optional)	6.0	£11,000	
BSc Computing	3/4 years	Sandwich (optional)	6.0	£11,000	
BSc Computing and Digital Sound	3/4 years	Sandwich (optional)	6.0	£11,000	
BSc Computing and Information Systems	2 years	Part-time distance learning top up	6.0	£tbc	
BSc Computing and Society	3/4 years	Sandwich (optional)	6.0	£11,000	
BSc Computing and the Digital Image	3/4 years	Sandwich (optional)	6.0	£11,000	
BSc Digital Forensics	3/4 years	Sandwich (optional)	6.0	£11,000	
BSc Ecommerce and Internet Systems	3/4 years	Sandwich (optional)	6.0	£11,000	
BSc Software Engineering	3/4 years	Sandwich (optional)	6.0	£11,000	
BSc Web Technologies	3/4 years	Sandwich (optional)	6.0	£11,000	
MSc Forensic Information Technology	1 year	Full time	6.5	£11,000	
MSc Information Systems	1 year	Full time	6.0	£11,000	
MSc Information Technology	3 years	Part-time distance learning	6.0	£11,000	
MSc Software Engineering	1 year	Full time	6.0	£11,000	



Our associ

Sparsholt College

Sparsholt College, Hampshire, is a leading centre of education and training for the land-based and outdoor industries with a strong regional, national and international reputation.



For further information, please contact us
T: +44(0)1962 776441
E: enquiry@sparsholt.ac.uk
W: www.sparsholt.ac.uk

It has recently been named an Associate College of the University of Portsmouth in recognition of the close and mutually beneficial partnership that has been forged between the two academic institutions over the past 12 years.

There are more than 2,500 full-time and 5,000 part-time students enrolled at Sparsholt College. Of these, some 335 full-time and 152 part-time students are enrolled on 21 University of Portsmouth accredited programmes. The range of degree subjects at Sparsholt College includes:

- animal and zoo resource management
- aquaculture and fisheries studies
- arboriculture and woodland management
- conservation and wildlife management
- equine studies
- horticulture and garden design

- marine ecology and conservation
- sustainable rural land management
- veterinary health studies and nursing

Courses at Sparsholt are supported by dedicated facilities of exceptional quality and national importance including the National Aquatic Training Centre, their own sawmill, an extensive animal management centre with its own zoo licence and an equine centre that is included within London 2012's Pre-Olympic Games Training Camp Guide.

Sparsholt College has three Centres of Vocational Excellence (CoVEs) in leadership and management; animal management and veterinary nursing; and game, wildlife and countryside management and fishery studies. CoVE status is awarded by a funding body, the Learning and Skills Council, in recognition of the College's high-quality vocational training that meets the needs of employers.

Strong leadership and management across the College, supported by the commitment of dedicated staff, create a passion for excellence and achievement. This high level of motivation runs through the whole College community, resulting in high achievement and success rates.

Sparsholt College is situated in rolling countryside near the village of Sparsholt, four miles north-west of the City of Winchester – England's ancient capital – and 32 miles from Portsmouth. The area combines a rural setting with good road and rail links to London, and local airports at Southampton and Bournemouth. Situated in the heart of Hampshire, the New Forest, the south coast and the Salisbury Plains are all within easy reach.

ate colleges

International College Portsmouth

International College Portsmouth (ICP) offers international students a direct pathway to a University of Portsmouth degree. International students previously unable to take advantage of the University's excellent courses now have full access to a range of degree programmes thanks to ICP.



Centrally located on the University's city-centre campus, ICP provides International Foundation, 1st-year degree and Pre-Masters programmes and caters specifically for international students who might not otherwise qualify for direct entry to the University of Portsmouth.

Pathway programmes currently offered by ICP cover a range of subjects including business, engineering, law, science, computing, mathematics and creative technologies, and, upon successful completion, all courses provide guaranteed progression to a University of Portsmouth undergraduate or postgraduate degree.

ICP offer three intakes per year (September, January and May), meaning that students can begin their studies whenever is most suitable. Undergraduate applicants also don't need to apply through UCAS as ICP operates its own admission system; undergraduate and postgraduate applicants simply submit a complete application form, along with the relevant documents, directly to ICP – eligible students will receive an offer letter within 24 hours.

Why choose ICP?

ICP students have access to the University of Portsmouth's facilities and services, including the doctors' surgery, the library and the University's sports teams.

ICP promotes a personalised and supportive learning environment that encourages students to reach their maximum potential. For this reason, classes at ICP are small, with a maximum of 30 students, and all lecturers are selected for their specialist experience of teaching international students. Lecturers are also available after class to give extra support and further help.

ICP has been designed specifically to cater to the needs of international students and boasts an experienced team of support staff. These staff can help with everything from finding safe and secure accommodation, to arranging airport pick-ups and providing a full orientation programme upon arrival in Portsmouth. There is even a dedicated 24-hour phone number that ICP students can call in an emergency, providing peace of mind to not only the students, but also their family back at home.

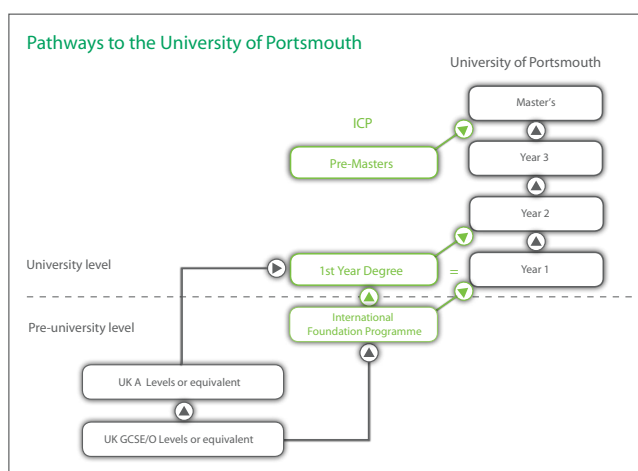
English language preparation

For those who do not meet the minimum English language requirements for the programme, ICP can provide intensive courses to help improve English skills. Students studying English will be a full member of ICP and so, like those studying academic programmes, they will have access to the University of Portsmouth facilities.

Tuition Fees

International Foundation Programme (two semesters)	£7,320
1st-year degree in business or accounting with finance	£7,320
English for Academic Purposes (per semester)	£2,000

For further details:
T: +44 (0)23 9284 8540
E: info@icp.port.ac.uk
W: www.port.ac.uk/icp



Our overseas agents and representatives

We have a network of over 150 overseas representatives worldwide who can provide further information on studying at the University. As well as advice and guidance on your application, many of our representatives offer a visa counselling service to assist you with UK entry clearance preparation. They can also provide you with a pre-departure briefing. All our representatives are accredited by the University and can be relied upon to provide accurate and up-to-date advice on studying with us.

Contact details for our current representatives can be found at www.port.ac.uk/international/regions.



Useful

General and admissions enquiries

International Office

University of Portsmouth
Nuffield Centre
St Michael's Road
Portsmouth PO1 2ED
United Kingdom

T: +44 (0)23 9284 3488
F: +44 (0)23 9284 3538
E: international.office@port.ac.uk
E: eu.students@port.ac.uk
E: studyabroad@port.ac.uk

South East Asia Regional Office

Suite 13A-05, Tower B,
Northpoint Offices,
Mid Valley City, No.1 Medan Syed Putra,
Utara 59200, Kuala Lumpur, Malaysia

T: +60 3 2287 6607
F: +60 3 2287 6609
E: searo@port.ac.uk

China Office

University of Portsmouth China Office
1005 Lansheng Plaza
8 Huaihai Zhong Road
Shanghai 200021

T: +86 (0)21 6319 1155
F: +86 (0)21 6319 0086
E: china.office@port.ac.uk
W: www.portsmouthchina.cn

Academic Registry

University of Portsmouth
University House
Winston Churchill Avenue
Portsmouth, PO1 2UP
United Kingdom

T: +44 (0)23 9284 3475
F: +44 (0)23 9284 3082
E: international.admissions@port.ac.uk

UCAS

Rosehill, New Barn Lane,
Cheltenham, GL52 3LZ,
United Kingdom

T: +44 (0)1242 222444
E: enquiries@ucas.ac.uk

contact details

Pre-sessional English language course enquiries

School of Languages and Area Studies

University of Portsmouth,
Park Building, King Henry I Street,
Portsmouth, PO1 2DZ, United Kingdom

T: +44 (0)23 9284 6060
F: +44 (0)23 9284 6040
E: efl@port.ac.uk

Language Specialists International (LSI)

1-13 Lord Montgomery Way,
Portsmouth, PO1 2AH, United Kingdom

T: +44 (0)23 9229 1811
F: +44 (0)23 9275 0435
E: contact@lsi-international.co.uk

Student support services enquiries

University of Portsmouth,
Nuffield Centre, St Michael's Road,
Portsmouth, PO1 2ED, United Kingdom

T: +44 (0)23 9284 3157
(general enquiries)

Student Housing

T: +44 (0)23 9284 3214
F: +44 (0)23 9284 5900
E: student.housing@port.ac.uk

Additional Support and Disability Advice Centre

T: +44 (0)23 9284 3462
E: asdac@port.ac.uk

Student Finance Centre

T: +44 (0)23 9284 3014
E: student.finance@port.ac.uk

Faculty Admissions

Teaching and research at the University of Portsmouth is organised within five faculties and these are divided into schools or departments.

Portsmouth Business School

University of Portsmouth,
Admissions Centre,
Richmond Building, Portland Street,
Portsmouth, PO1 3DE, United Kingdom

T: +44 (0)23 9284 8200
F: +44 (0)23 9284 4040
E: bus.admissions@port.ac.uk

- Department of Accounting and Finance
- Department of Economics
- Department of Human Resource and Marketing Management
- School of Law
- Department of Strategy and Business Systems

Faculty of Creative and Cultural Industries

University of Portsmouth, 7th floor
Mercantile House, Hampshire Terrace,
Portsmouth, PO1 2EG, United Kingdom

T: +44 (0)23 9284 2421
F: +44 (0)23 9284 5192
E: create.admissions@port.ac.uk

- School of Creative Technologies
- Portsmouth Centre for Enterprise
- Portsmouth School of Architecture
- Portsmouth School of Art, Design and Media
- School of Creative Arts, Film and Media

Faculty of Humanities and Social Sciences

University of Portsmouth,
Park Building, King Henry I Street,
Portsmouth, PO1 2DZ, United Kingdom

T: +44 (0)23 9284 8299
F: +44 (0)23 9284 6011
E: humanities.admissions@port.ac.uk

- Institute of Criminal Justice Studies
- School of Education and Continuing Studies
- School of Languages and Area Studies
- School of Social, Historical and Literary Studies

Faculty of Science

University of Portsmouth,
St Michael's Building,
White Swan Road,
Portsmouth, PO1 2DT, United Kingdom

T: +44 (0)23 9284 5550
F: +44 (0)23 9284 3335
E: sci.admissions@port.ac.uk

- Department of Geography
- Department of Psychology
- Department of Sport and Exercise Science
- School of Biological Sciences
- School of Professionals Complementary to Dentistry
- School of Earth and Environmental Sciences
- School of Health Sciences and Social Work
- School of Pharmacy and Biomedical Sciences

Faculty of Technology

University of Portsmouth,
Anglesea Building, Anglesea Road,
Portsmouth, PO1 3DJ, United Kingdom

T: +44 (0)23 9284 2555
F: +44 (0)23 9284 2525
E: technology-admissions@port.ac.uk

- School of Civil Engineering and Surveying
- Department of Electronic and Computer Engineering
- Department of Mathematics
- Department of Mechanical and Design Engineering
- Institute of Cosmology and Gravitation
- School of Computing

How to find us

Portsmouth enjoys a prime position on England's south coast, served by first-class air, road and sea connections to the rest of Britain and Europe.

Road

From London: (A3(M)) or the east:

After junction of A3(M) and A27, ignore first exit from A27 (signposted 'Southsea A2030') and second exit ('London, Cosham A3') then bear left at next junction (J12) following signs for 'M275 Portsmouth, Continental Ferries'.

From Southampton and the west:

From the west, follow the M27 past Fareham and at the next junction (J12) follow signs for 'M275 Portsmouth, Continental Ferries'.

Rail

- **London Waterloo** (1 hr 30 mins)
- **London Victoria** (2 hrs)
- **Bristol** (2 hrs)
- **South Wales** (3 hrs 15 mins)
- **South Coast services** to Southampton, Bournemouth and Brighton
- **London 2012 Olympic venues** (many are within approximately two hours by rail)

Coach services

Regular daily coach services to and from:

- **London** for countrywide connections
- **Bristol** for West Country/South Wales
- **Birmingham**
- **Heathrow**

Air

- **Southampton International Airport**
(30 minutes via M275/M27) Regular flights to destinations within the UK and Europe
- **Heathrow Airport**
(1 hr 30 mins via A3(M)/M25) For all international connections
- **Gatwick Airport**
(1 hr 30 mins by road, 1 hr 36 mins by rail) For international connections

Sea

France (daily sailings):

- **Cherbourg**
- **Le Havre**
- **Caen/Ouistreham**
- **St Malo**

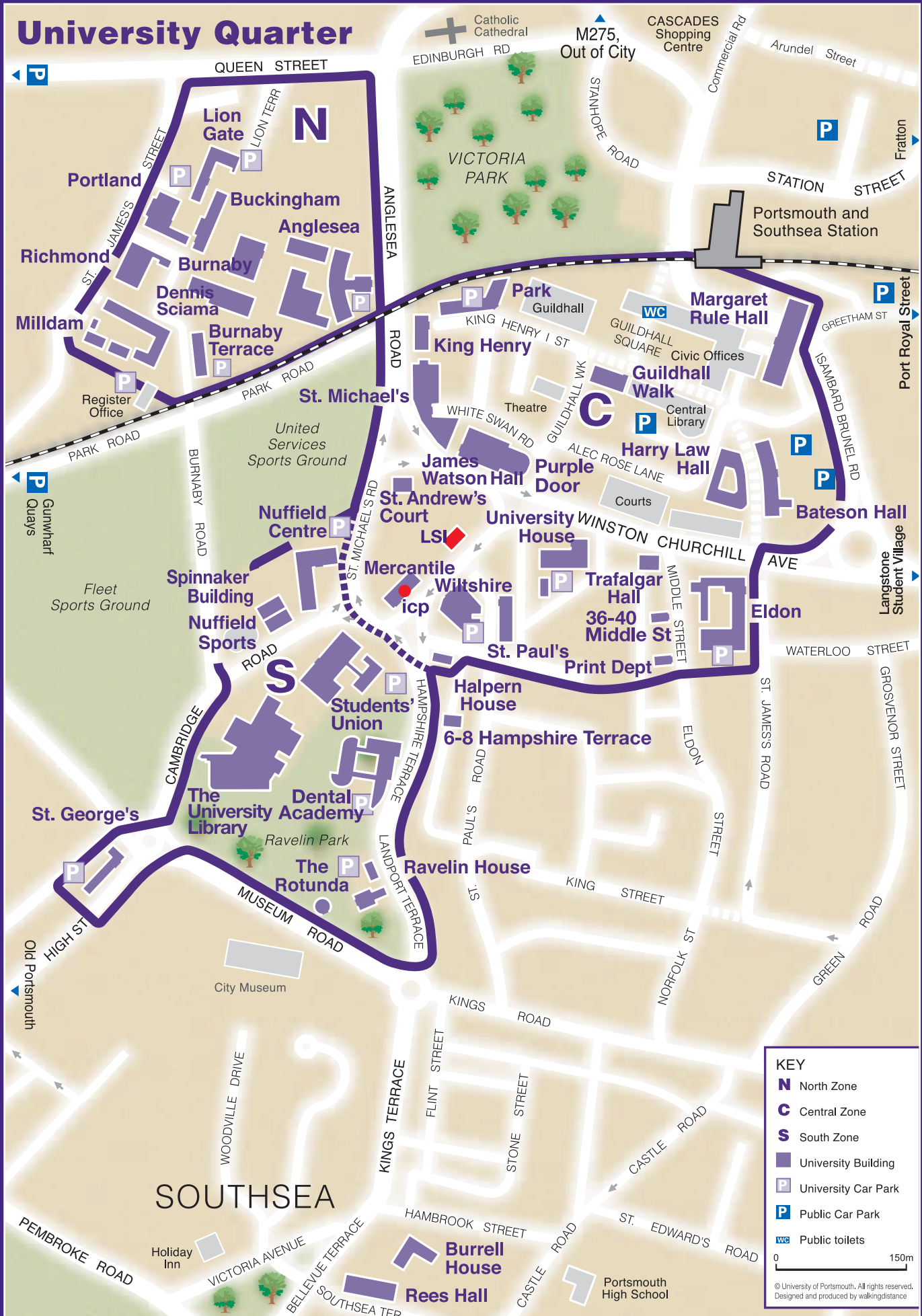
Spain:

- **Bilbao** (twice weekly)
- **Santander** (weekly)

Frequent daily services to:

- **Isle of Wight**
Catamaran (18 mins)
Hovercraft (15 mins)
Car/passenger ferry (35 mins)











Disclaimer

It is important that you read and make sure you understand this disclaimer. In the event that you become a student at the University of Portsmouth, this becomes part of any contract between you and the University. Any offer of a place that we make to you is on the basis that you have read and understood the terms of the disclaimer and agree to be bound by them.

We (the University of Portsmouth) have checked the information in this prospectus and believe that it is accurate at the time of going to press (July 2010). However, course details, fees and other information may change. It is your responsibility to confirm that the course you wish to study is suitable for your needs, interests and abilities, and that the service, support and facilities provided by the University of Portsmouth meet your requirements. If you accept the offer of a place on one of our courses, but later decide that you wish to change or withdraw from your course of study, the responsibility for doing so and for any costs which you may incur is yours alone.

We will endeavour to deliver courses in keeping with the course descriptions in this prospectus, but reserve the right to change the content, timetabling, fees administration and other organisation of courses, subject to maintaining equivalent academic and quality standards.

We do not accept responsibility if we are unable to fulfil our commitments through circumstances beyond our control. These include (by way of example but not limitation) illness, industrial action, civil emergencies or the actions of third parties.



Paper and print produced to ISO 14001 environmental management standards. Printed using vegetable-based inks on FSC recycled stock containing 100 per cent post consumer waste.

www.port.ac.uk/sustainability

If this document is in a format not accessible to you, contact Corporate Communications and we will provide the information in a more suitable format for you. Please email **corporate.communications@port.ac.uk**.





University of Portsmouth
International Office
Nuffield Centre
St Michael's Road
Portsmouth
PO1 2ED
United Kingdom

T: +44 (0)23 9284 3488
E: international.office@port.ac.uk
W: www.port.ac.uk

